

2023 ACADEMIC SHOWCASE SCHEDULE

Tuesday, April 18
9 a.m. - 4 p.m.



www.franklinpierce.edu/academicshowcase

Franklin Pierce University welcomes you to the
2023 Academic Showcase

WELCOME

Dr. Kim Mooney '83, President

Franklin Pierce University
9 a.m. | Spagnuolo Hall

SCHEDULE OF EVENTS

Poster Session One | Students and Faculty

9:15 - 10:30 a.m. | Spagnuolo Hall

Student, Faculty, and Staff Presentations

10 a.m. - 12 p.m. | Various Locations

Pep Band and Jazz Ensemble Performances

12 p.m. | Courtyard

Student, Faculty, and Staff Presentations

1 - 3 p.m. | Various Locations

Poster Session Two | FYI Students

1 - 2 p.m. | Spagnuolo Hall

S'mores

3 p.m. | Library Cafe

Franklin Pierce Diamond Steppers Performance

3 p.m. | Courtyard

Maple Syrup Label Competition

DiPietro Library

Virtual Presentations

www.franklinperce.edu/academicshowcase

SPAGNUOLO HALL, EMILY FLINT CAMPUS CENTER

TIME	TITLE
9 - 9:15 a.m.	WELCOME by Dr. Kim Mooney '83, <i>President Franklin Pierce University</i>
9:15 - 10:30 a.m.	Poster Session One: Students and Faculty
1 - 2 p.m.	Poster Session Two: FYI Students

MARULLI WELCOME CENTER, PETERSON MANOR

TIME	TITLE	PRESENTER	FORMAT
10:30 - 11 a.m.	"By Her Hand"	Donna Decker, <i>Professor of English</i>	Performance
1 - 1:30 p.m.	To Be or Not To Be	Kaylee Geheb '23, Jenna Parent '25, Simeon Mills '25	Performance

FITZWATER 101, MARLIN FITZWATER CENTER FOR COMMUNICATION

TIME	TITLE	PRESENTER	FORMAT
10:30 - 11 a.m.	Massachusetts's Air Pollution Trends Since 2019	Morgan Schmutzler '23	Presentation
11:05 - 11:35 a.m.	Religion in Society	Rachel Swenson '23	Presentation
11:40 a.m. - 12:10 p.m.	A Semester on the Road to Santiago: The Long-term Impacts of Walking the Camino de Santiago with a Family-like Study Abroad Group	Doug Challenger, <i>Professor of Sociology</i>	Presentation
1 - 1:30 p.m.	The Global Water Crisis	Catherine Koning, <i>Professor of Environmental Science</i>	Presentation
1:35 - 1:40 p.m.	Discovery of a Bacteriophage from Brown Bat Guano	Forrest Veilleux '24	Presentation

FITZWATER 102, MARLIN FITZWATER CENTER FOR COMMUNICATION

TIME	TITLE	PRESENTER	FORMAT
10 - 10:30 a.m.	A Case Study in University School Collaboration	Joan Swanson, <i>Associate Professor and Director of the School of Education</i> Rueben Duncan, <i>School Superintendent</i>	Presentation
10:35 - 11:05 a.m.	Early Modern Sexuality in the Archives and on Stage	Jess Landis, <i>Associate Professor of English and Composition</i>	Presentation

FITZWATER STUDIO, MARLIN FITZWATER CENTER FOR COMMUNICATION

TIME	TITLE	PRESENTER	FORMAT
11:30 a.m. - 12 p.m.	Walk for Ukraine	Caitlin Agnew '23	Screening. Live Stream Link:
2 - 2:30 p.m.	Innocent or Guilty - A discussion about the RaDonda Vaught case and its implications for nurses	Diana Connors '23	Screening. Live Stream Link:

MARCELLA 102, MARCELLA HALL

TIME	TITLE	PRESENTER	FORMAT
10 - 10:30 a.m.	The Prosecution of Child Sex Offenses	Oaklee Lamberto '23	Presentation
10:35 - 11:05 a.m.	Immigrant Identity since the 1900s	Oaklee Lamberto '23	Presentation
1 - 1:30 p.m.	Sinead O'Connors "Famine": Art Meets History	Paul Jenkins, <i>University Librarian</i> Mary Kelly, <i>Professor of History</i>	Presentation
1:35 - 3 p.m.	Designing A Sustainable Campus	Joshua Cline, <i>Adjunct Instructor</i>	Charette (<i>planning activity session</i>)

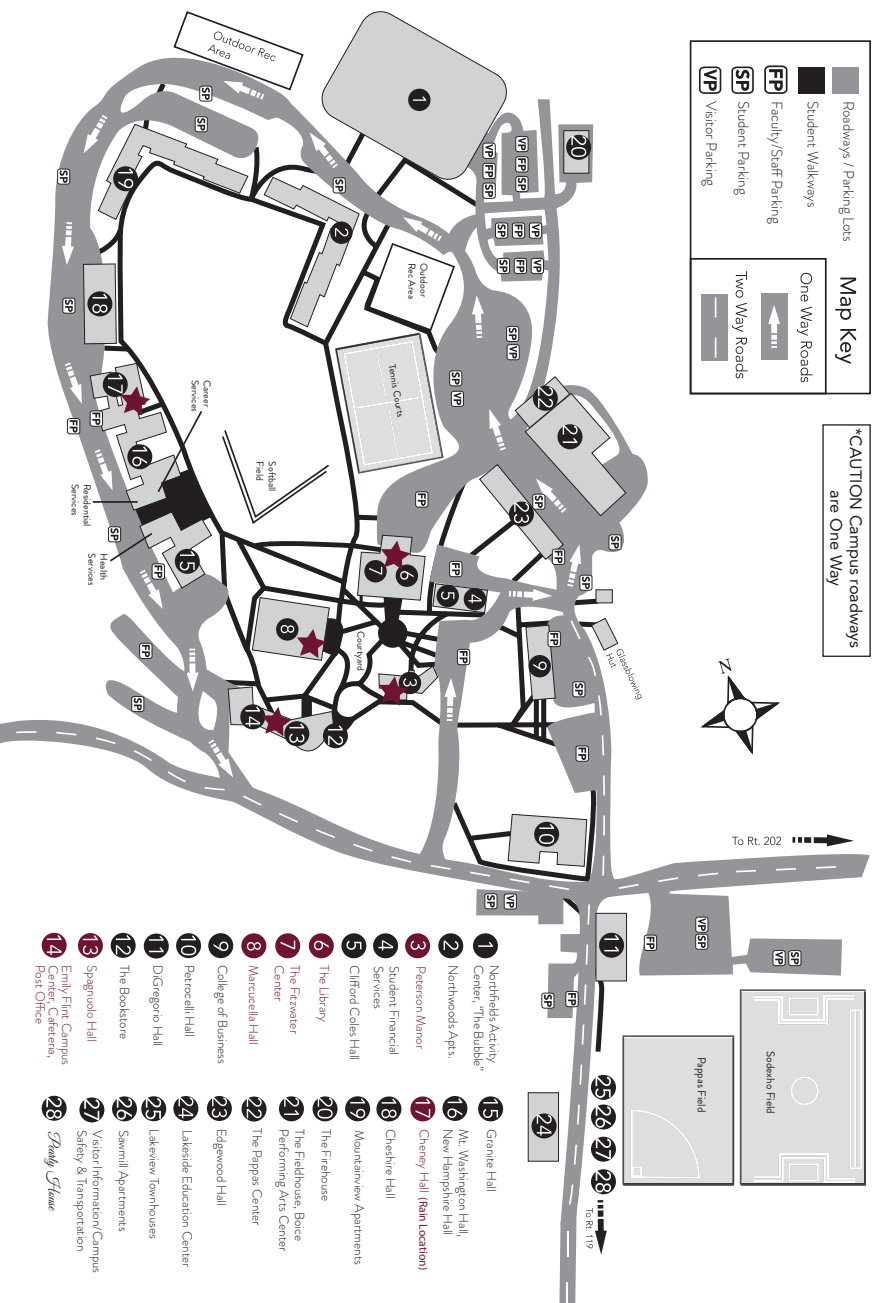
OTHER LOCATIONS

TIME	PRESENTATION	LOCATION
12 - 1 p.m.	Pep Band and Jazz Ensemble Performances	Library Courtyard (Cheney Hall)
2:30 - 3 p.m.	Randy Peralta '25, Musical Performance	Cheney Hall
3 - 3:30 p.m.	Jumanji: Diamond Steppers Performance	Cheney Hall
3 - 4 p.m.	S'Mores	Courtyard, Library Café Patio

	Roadways / Parking Lots
	Student Walkways
	Faculty/Staff Parking
	Student Parking
	Visitor Parking

Map Key
One Way Roads
Two Way Roads

***CAUTION** Campus roadways are One Way



- 1 Northfields Activity Center, "The Bubble"
- 2 Northwoods Apts.
- 3 Pearson Manor
- 4 Student Financial Services
- 5 Clifford Coles Hall
- 6 The Library
- 7 The Fitzwater Center
- 8 Mercetella Hall
- 9 College of Business
- 10 Peircecell Hall
- 11 D'Gregorio Hall
- 12 The Bookstore
- 13 Spagnuolo Hall
- 14 Emily/Frank Campus Center, Cafeteria, Post Office
- 15 Granite Hall
- 16 Mt. Washington Hall
- 17 Cheney Hall (Ban location)
- 18 Cheshire Hall
- 19 Mountarnew Apartments
- 20 The Freehouse
- 21 The Freshouts, Boice Performing Arts Center
- 22 The Pappas Center
- 23 Edgewood Hall
- 24 Lakeside Education Center
- 25 Lakereview Townhouses
- 26 Sawmill Apartments
- 27 Visitor Information/Campus Safety & Transportation
- 28 *Study Skans*