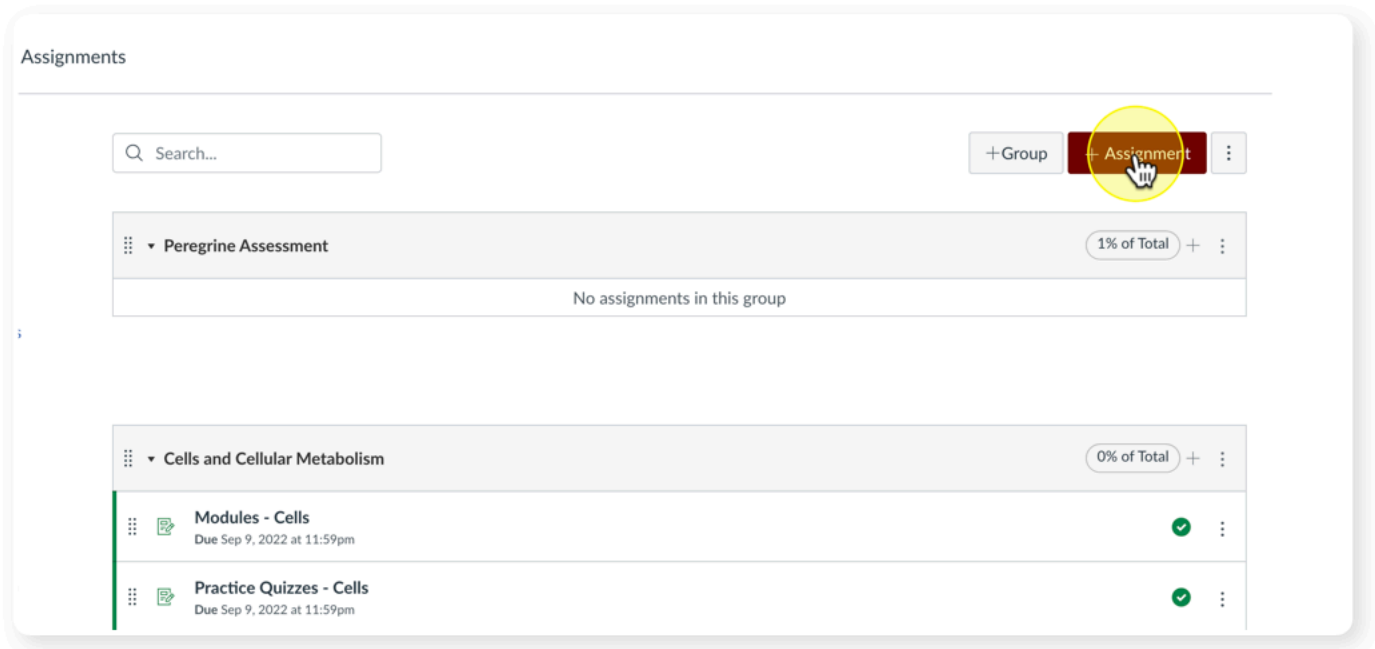


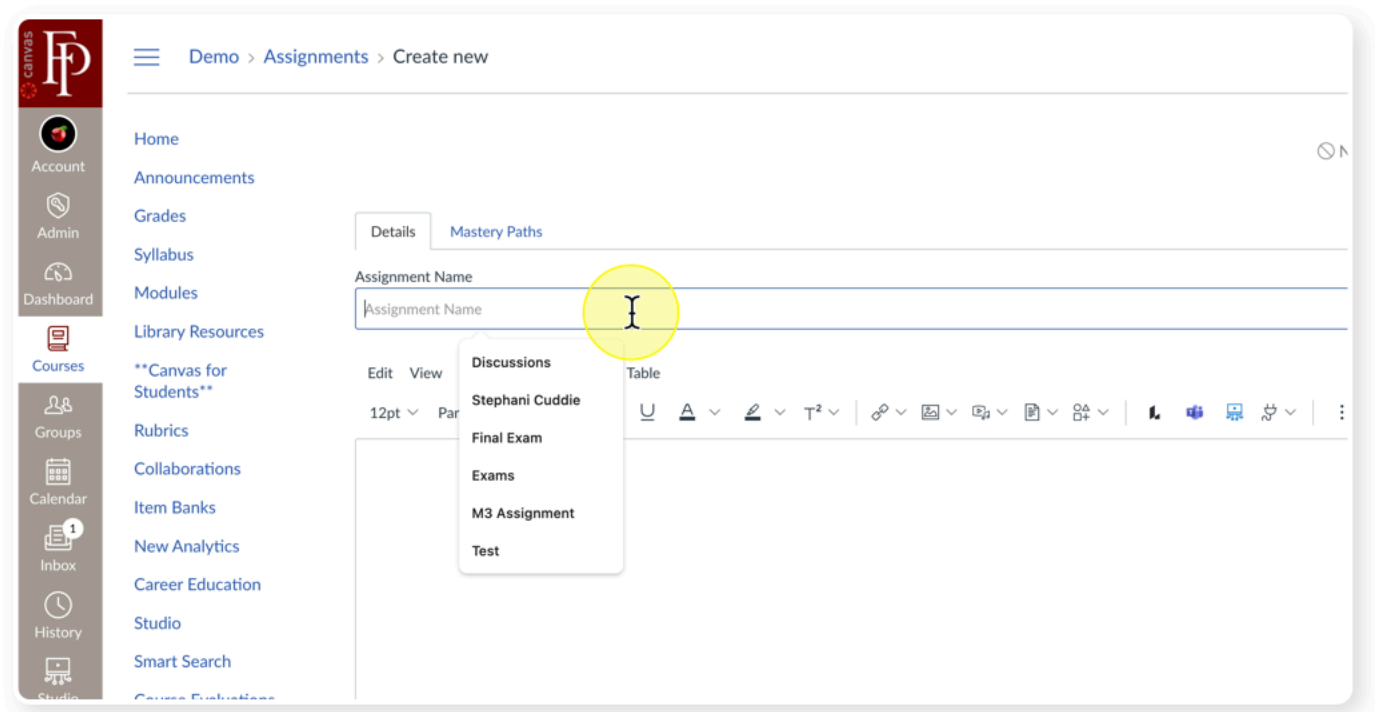
# Adding a Peregrine Assessment to Canvas Course

Created March 11, 2025

## 1 Click on "+ Assignment"



## 2 Give your assignment a name, provide any directions in the rich content editor.



### 3 Place your assessment in the desired assignment group (not required)

Modules

Library Resources

\*\*Canvas for Students\*\*

Rubrics

Collaborations

Item Banks

New Analytics

Career Education

Studio

Smart Search

Course Evaluations

Discussions

Pages

Quizzes

BigBlueButton

Outcomes

Files

Assignments

People

Points: 10

Assignment Group: **✓ Peregrine Assessment**

Display Grade as

Submission Type

Enter or find an External Tool URL

<http://www.example.com/launch> Find

Load This Tool In A New Tab

### 4 For Submission Type, select "External Tool"

New Analytics

Career Education

Studio

Smart Search

Course Evaluations

Discussions

Pages

Quizzes

BigBlueButton

Outcomes

Files

Assignments

People

Lucid (Whiteboard)

LinkedIn Learning

Microsoft Teams classes

Settings

Points: 10

Assignment Group: Peregrine Assessment

Display Grade as: Points

Submission Type: **✓ External Tool**

External Tool Options

Enter or find an External Tool URL

<http://www.example.com/launch> Find

Load This Tool In A New Tab

Submission Attempts: Allowed Attempts

Unlimited

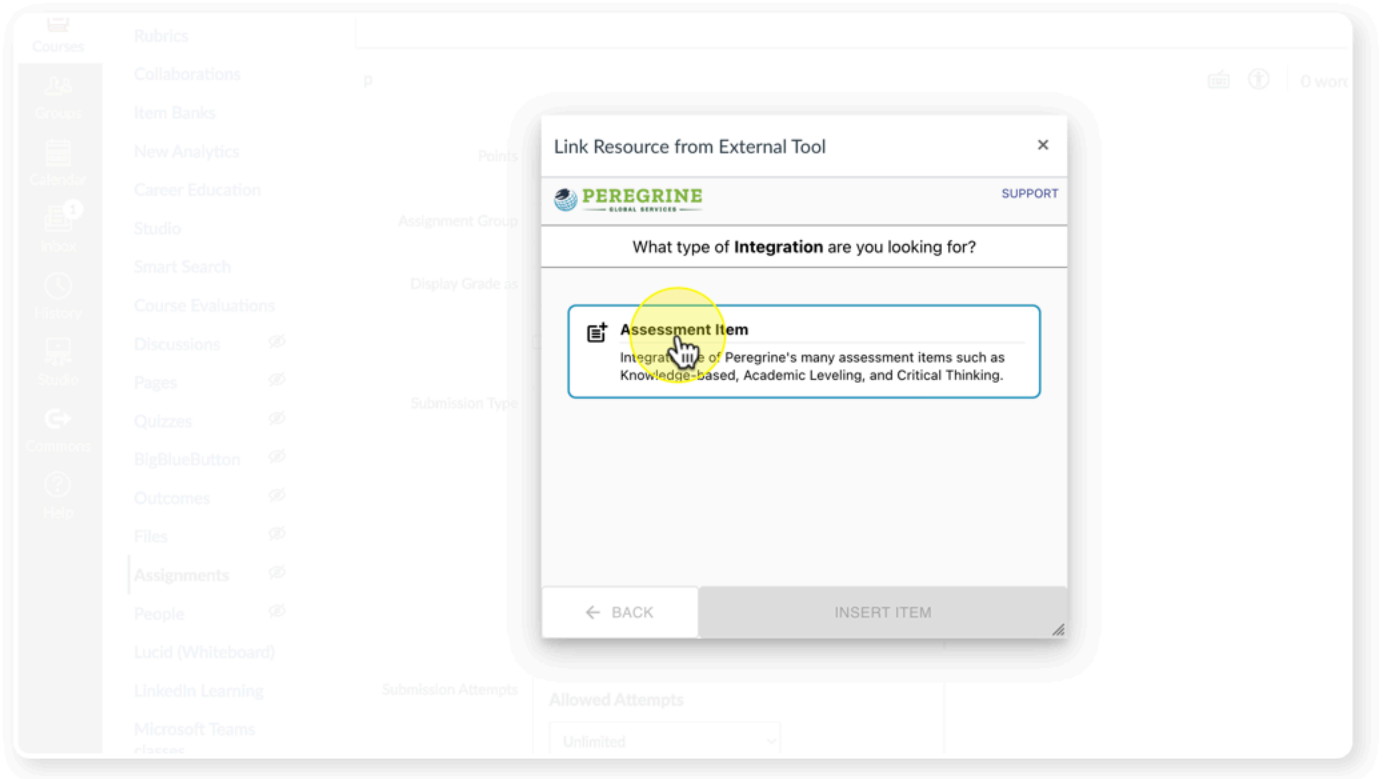
## 5 Click on "Find"

The screenshot shows a configuration form for an external tool. The 'Assignment Group' is set to 'Peregrine Assessment' and 'Display Grade as' is set to 'Points'. The 'Submission Type' is 'External Tool'. The 'External Tool Options' section includes a text input field for the URL containing 'http://www.example.com/launch', a 'Find' button (highlighted with a yellow circle and a hand cursor), and a checkbox for 'Load This Tool In A New Tab'. The 'Submission Attempts' section is set to 'Allowed Attempts' with a dropdown menu showing 'Unlimited'. The 'Moderated Grading' section has a checkbox for 'Moderated Grading' which is unchecked, with a sub-note: 'Allow moderator to review multiple independent grades for selected submissions'.

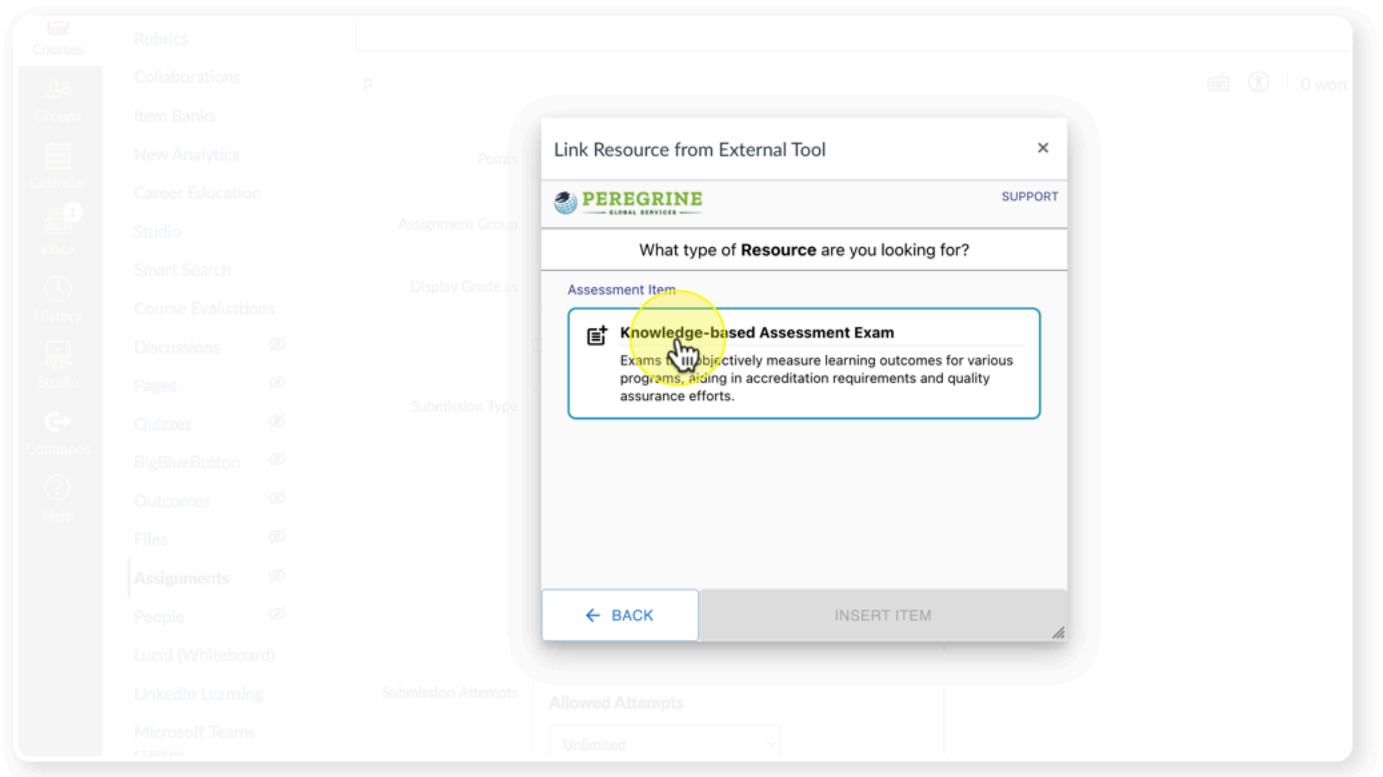
## 6 Click on "Peregrine Global Services - Business"

The screenshot shows the 'Configure External Tool' dialog box overlaid on the configuration form. The dialog box contains a list of tools with a search icon on the right. The tool 'Peregrine Global Services - Business' is selected and highlighted. A hand cursor is pointing at the selection. Below the list are 'Cancel' and 'Select' buttons. The background form is partially visible, showing the 'Assignment Group' and 'Display Grade as' fields.

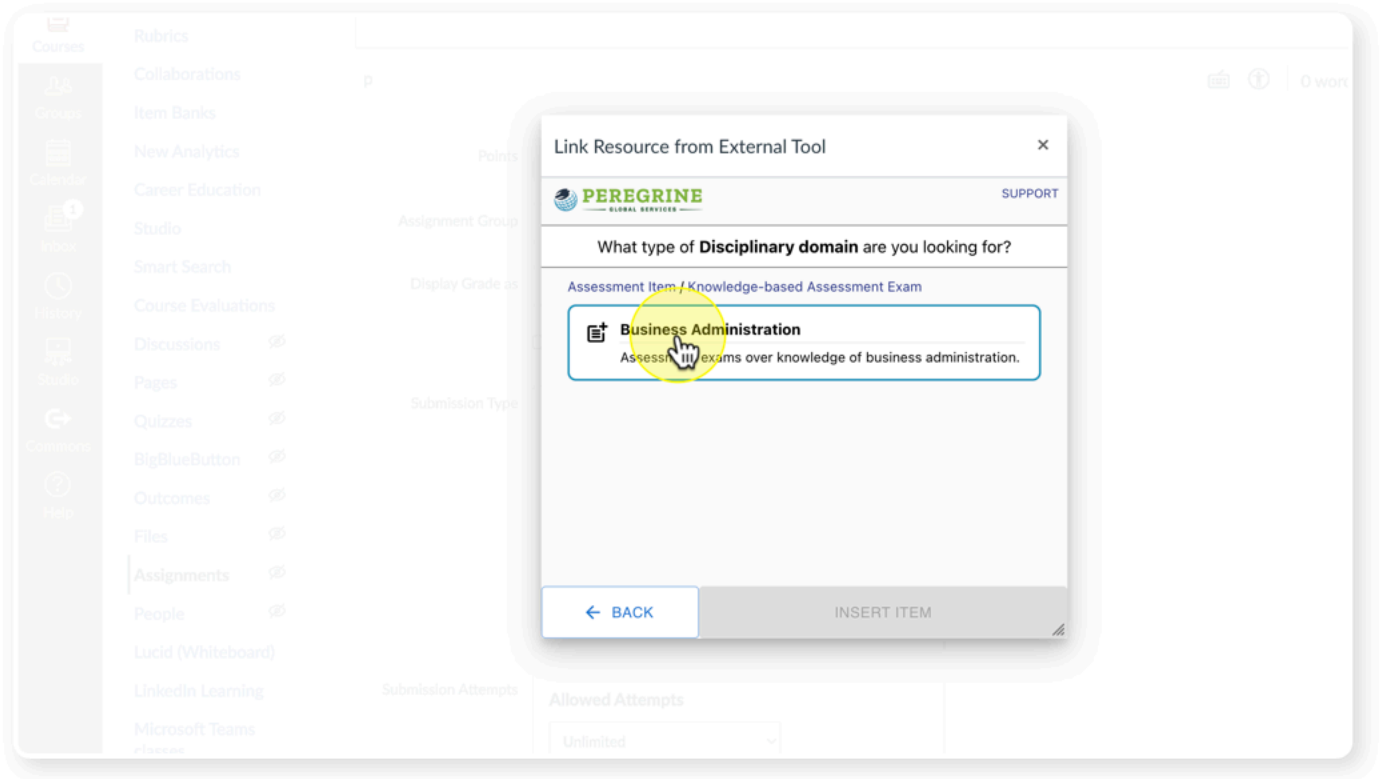
## 7 Click on "Assessment Item"



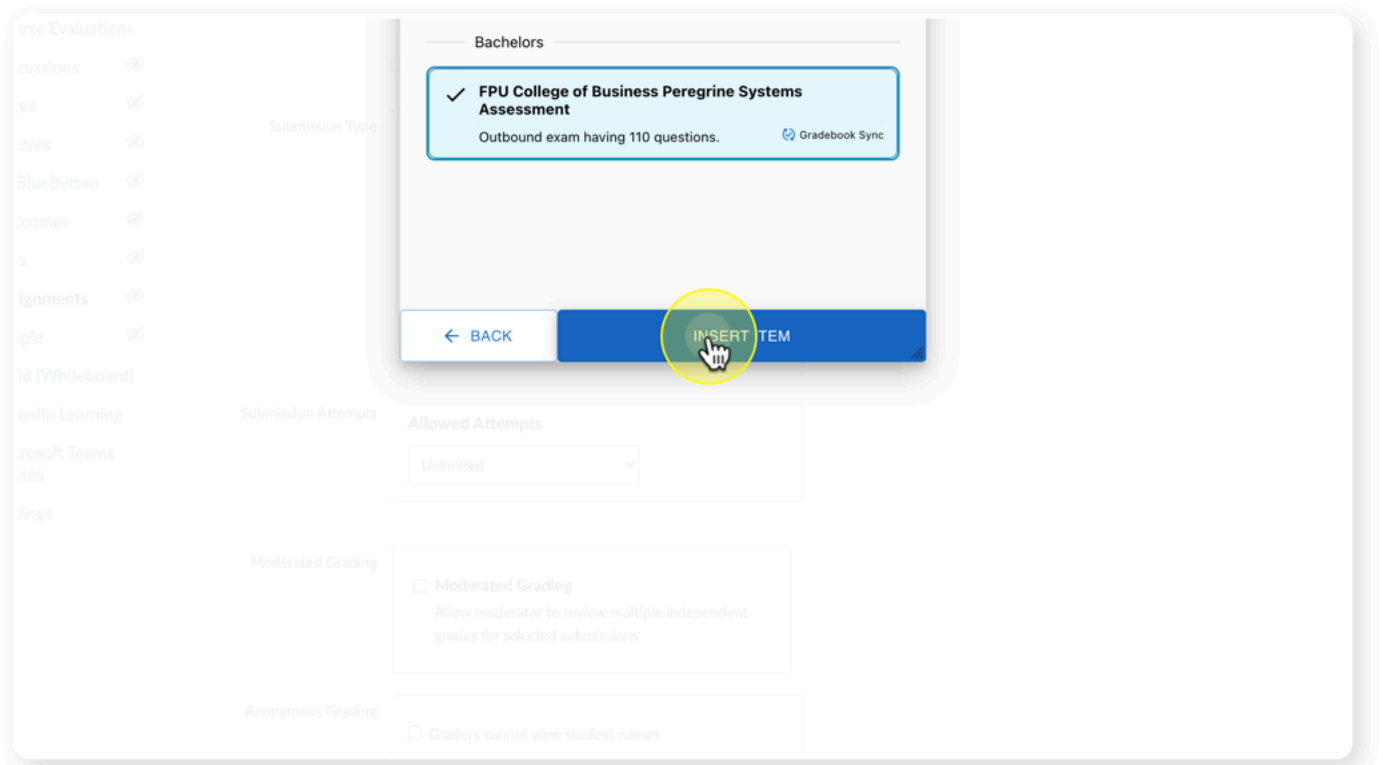
## 8 Click on "Knowledge-based Assessment Exam"



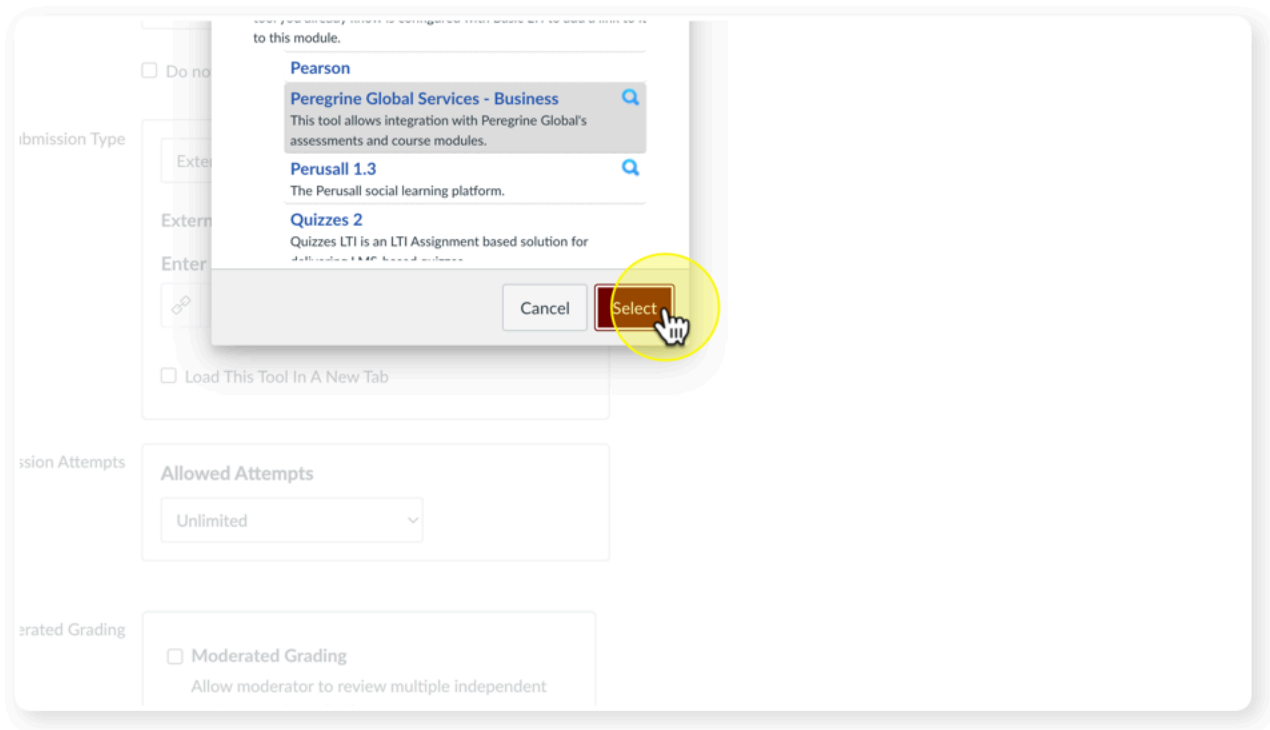
9 Click on "Business Administration"



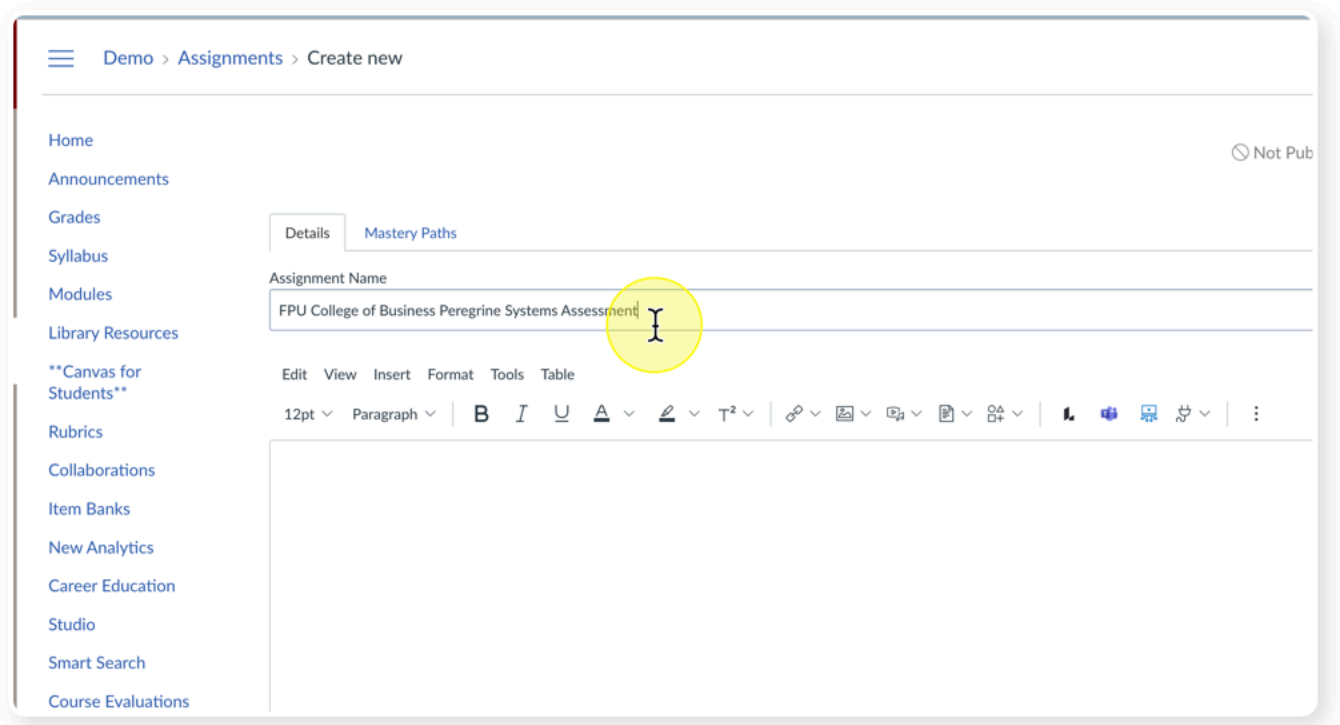
10 Click on "FPU College of Business Peregrine Systems Assessment" and then Insert Item



## 11 Click on "Select"



## 12 NOTE: The Assignment Name will change to what is shown below - you can change this to your desired assignment name.



13

## Click on "Save & Publish"

Anonymous Instructor Annotations  Anonymize all annotations made by instructors on submissions for this assignment in DocViewer

Assign Access

**Assign To**

Everyone × Start typing to search... ▾

**Due Date**  **Time**  Clear

**Available from**  **Time**  Clear

**Until**  **Time**  Clear

+ Assign To

Notify users that this content has changed

Cancel **Save & Publish** Save