



DOCTOR OF PHYSICAL THERAPY

FPU BRINGS A TRADITION OF EXCELLENCE INTO THE DOCTOR OF PHYSICAL THERAPY PROGRAM.

AFFORDABLE

.....

FAST

.....

FLEXIBLE

.....

COMPLETE IN 25.5 - 30 MONTHS IN EITHER AN ON-SITE OR HYBRID PROGRAM

Franklin Pierce offers two full-time program formats, both fully accredited by the Commission on Accreditation in Physical Therapy Education. Launch your physical therapy career with our graduate-level program available at locations in New Hampshire (full-time, on-site) and Arizona (full-time, hybrid). Combine hands-on clinical experience with courses on theory, science, and practice. Help people in hospitals, care facilities, outpatient clinics, and other settings restore and maintain optimal physical function.

The on-site New Hampshire program is a two-and-a-half-year offering with 38 weeks of clinical work with courses, lectures, and seminars (117 total credits) and small classes and early clinical experience.

Our hybrid program in Arizona offers a 25.5 month program format, blending online learning sessions and intensive, five day in-person labs. During the first two terms, the intensive labs are held three times, and in subsequent terms, twice a term for a total of 15 sessions in the didactic 18 months. Students will complete the program with 30 weeks of full time clinical experiences.

In both programs, accomplished faculty bring real-world experience and teach hands-on skills in state-of-the-art labs. Our graduates consistently achieve 98-100% pass rates on the National Physical Therapy Licensure Exam (NPTE). The CAPTE-accredited DPT program will prepare you to work in hospitals, skilled nursing and assisted living facilities, outpatient clinics, wellness and sports facilities, and private homes.

APPLY TODAY!

franklinpierce.edu/gradapply

DPT

Franklin Pierce University
College of Health and
Natural Sciences

dptprogram@franklinpierce.edu



DOCTOR OF PHYSICAL THERAPY

PROGRAM GOALS

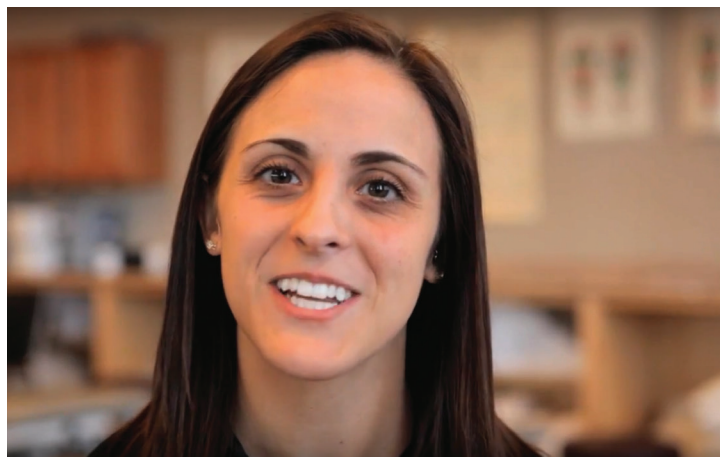
1. Be proficient to practice as effective and safe autonomous practitioners.
2. Demonstrate commitment to the physical therapy profession and the betterment of the health of society.

ADMISSION REQUIREMENTS

- Completion of a baccalaureate degree from an accredited institution.
- Achievement of a minimum cumulative GPA of 3.0 on a 4.0 scale.
- In order to assure understanding of the breadth of PT practice, it is recommended that the applicant have at least 40 hours of experience with a physical therapist in multiple locations if possible.
- Complete the following science prerequisite courses at the science major level:
 - Human Anatomy and Physiology (6-8 credits including labs)
 - Biology (6-8 credits)
 - Chemistry (6-8 credits including labs)
 - Physics (6-8 credits including labs)
- Complete a Statistics course
- Complete a Psychology course (3 credits)
Note: Must be a course offered through the Psychology Department

APPLICATION PROCESS

The admissions process is the same for the Manchester and Goodyear DPT program. Applications are accepted through the Physical Therapist Centralized Application Service (PTCAS) at ptcas.org. The PTCAS application cycle opens midsummer for the following academic year.



ALUMNI IN THE SPOTLIGHT

Kendra Lajoie '15 DPT '18

After studying Biology on the Rindge Campus, Kendra “had a strong connection with Franklin Pierce and wanted to keep going to the DPT program in Manchester.” She found the same support system from faculty continued from her undergraduate studies into the doctoral program. “And most of the faculty are working as physical therapists in the clinic, so we get examples of real-life clinical experience.”

Franklin Pierce offers personal support through our enrollment team and an academic advisor to assist with onboarding, paving the way for student success. Our teams are ready to help you reach your career and educational goals.