



FranklinPierce
UNIVERSITY

2024
Annual Security
and
Fire Safety Report

Contains statistics from 2023, 2022, and 2021

Department of Campus Safety

RINDGE, NEW HAMPSHIRE
CAMPUS

This publication is produced in compliance with the Jeanne Clery Disclosure of Campus Security policy and Campus Crime Statistics Act and reflects the Crime and Fire statistics reported during the calendar year of 2018 on the Rindge Campus.

The Franklin Pierce Community is dedicated to the free and open examination and exchange of ideas in the pursuit of knowledge. This requires mutual trust among its members and a common respect for the rights, dignity and integrity of each person. This ambition is embraced in the University's Student Code of Conduct and the Honor Code.

The Franklin Pierce main campus is located in the Town of Rindge, New Hampshire a quiet rural community. Because of our rural environment, we are not subject to many of the problems of a city campus; however, we are also not insulated from crime. We urge all community members to be aware of the potential for crime and to take steps to prevent it.

The safety and security of our students, faculty, staff and guests is a priority at Franklin Pierce and the Campus Safety Department provides a variety of programs and services aimed at achieving this goal. Campus Safety operates 24 hours a day, seven days a week and is responsible for the protection of life and property, responding to calls for assistance, facilitating the movement of persons and vehicles around campus and documenting activity that violates campus policies. We commit our efforts and design our operation toward preventing and detecting crime, providing service to students, faculty, staff and guests and ensuring compliance with the policies and regulations of the University. No safety program, regardless of its depth or breadth, can anticipate or prevent all crime.

Franklin Pierce does not discriminate on the basis of race, religion, gender, gender identity, age, sexual orientation, ethnicity, national origin or disability. The University is an equal opportunity employer and encourages minorities and women to apply, both in terms of employment and to all the rights, privileges, programs and activities generally accorded or made available to its students. Inquiries concerning discrimination should be referred to the Vice President of Student Affairs, located in the Health Services suite in Granite Hall at Franklin Pierce.

MESSAGE FROM CAMPUS SAFETY

Welcome to Franklin Pierce. The University considers the safety of the students, University employees and their guests our highest priority. The Campus Safety Department is on duty 24 hours a day, year-round, patrolling and responding to requests for service.

All Campus Safety officers receive extensive training by completing A C T training, monthly safety quizzes, monthly training topics and are certified in CPR/AED and First Aid. All Campus Safety Employees receive “on the job” and in-service training throughout the year.

The men and women of Campus Safety are committed to providing an environment that is conducive to living, learning and working, through crime awareness education, proactive patrols, investigations, communications and extensive security services. We strive to enrich and support the University’s mission of education to prepare citizens and leaders of conscience whether our graduates' aspirations are global or local.

Through the enforcement of the Student Code of Conduct, we strive to assist students in the development of their intellect and character.

We are dedicated to providing a safe community in which a student can endeavor to accomplish their personal and educational goals; however, we recognize that Franklin Pierce, like any university campus, is not crime free. Thefts from residential rooms and offices are the most commonly reported crime on any university campus and usually occur when the occupant leaves the room unattended and open for a “couple of seconds”.

We understand that it takes the efforts of the entire University community to maintain a safe environment, therefore Campus Safety in conjunction with Residential Life staff encourage the students, faculty and staff to become active participants in crime prevention, by reporting suspicious activity, suspicious people and violations that they observe.

The Annual Security and Fire Safety Report is prepared and distributed to inform and increase the attentiveness of the University community. Please contact us with any questions you may have.

PREPARATION OF THE ANNUAL SECURITY REPORT

The Franklin Pierce Director of Campus Safety prepares this report to comply with the Jeanne Clery Disclosure of Campus Security Policy and Crime Statistics Act. The full text of this report can be located on our web site at www.franklinpierce.edu. This report is prepared in cooperation with the local law enforcement agency surrounding our main campus, Departments of Residential Life, Judicial Affairs, and the Division of Student Affairs. Each entity provides updated information on their educational efforts and programs to comply with the Act.

Campus crime, arrest and referral statistics include those reported to the Campus Safety Department, designated campus officials (including but not limited to directors, deans, department heads, Residential Life staff, judicial affairs, advisors to students/student organizations, athletic coaches), and local law enforcement agencies. These statistics may also include crimes that have occurred in private residences or businesses and is not required by law.

The Outreach and Counseling Center staff informs their clients of the procedures to report crime to the University Campus Safety on a voluntary or confidential basis, should they feel it is in the best interest of the client. A procedure is in place to anonymously capture crime statistics disclosed confidentially during such a session.

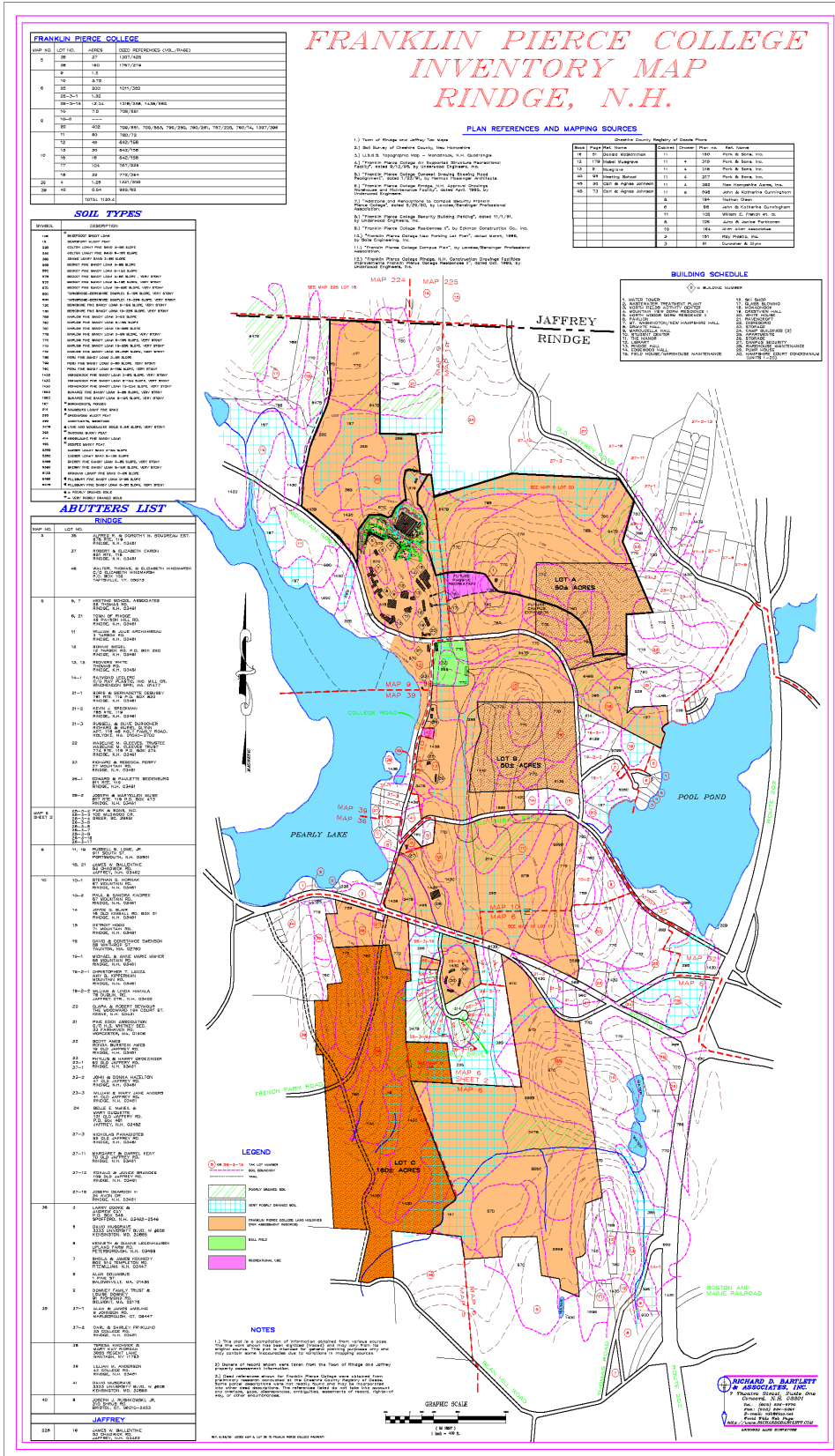
Each year, a post card is placed in each enrolled student's Franklin Pierce mailbox and also sent to each Faculty/Staff member via the on-campus mail system. The post card provides the web site to access this report. The report is updated annually and posted on our website by October 1 and includes the previous three years crime statistics.

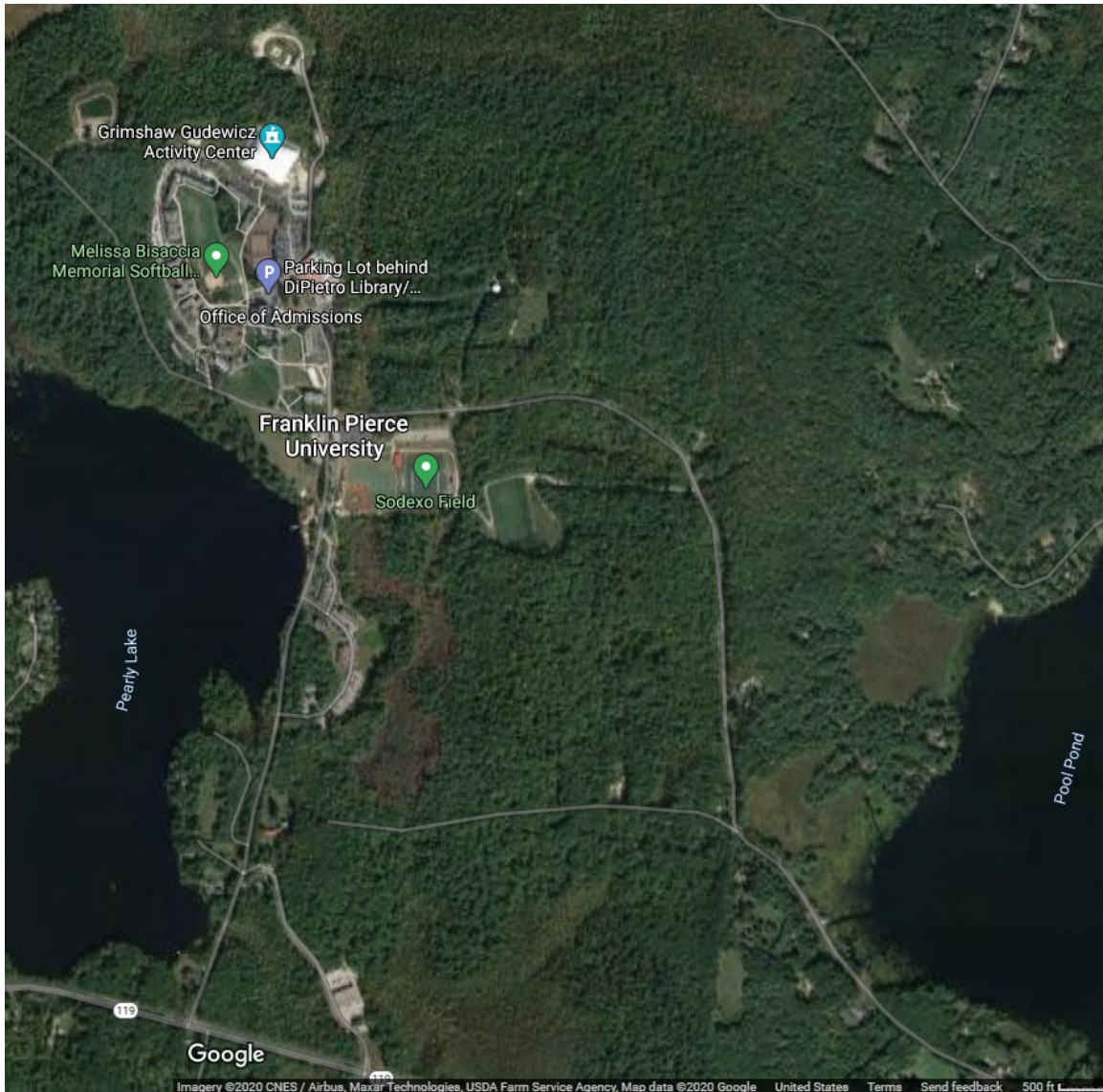
Copies of the report may also be obtained at Campus Safety, located at St. Peters; Admissions, located at Rindge Hall; Residential Life, located at New Hampshire Hall; Human Resources, located at DiGregorio Building or by calling (603)899-4000

All prospective employees may obtain a copy from Human Resources in DiGregorio Building or by calling (603) 899-4075.

This report is prepared annually; however, statistics reflect activity that occurred during the previous calendar year.

RINDGE CAMPUS GEOGRAPHY





The following is list of our buildings at the Rindge Campus:

Building	Street No.	Location	Units
DiGregorio Building	162	University Drive	
Boat House	139	University Drive	
Pappas Baseball Field Press Box	144	University Drive	
St. Peters Building	40	University Drive	
DiPietro Library	23	Manor Way	

Peterson Hall	15	Manor Way	
Rindge Hall	25	Manor Way	
Lacrosse Field Shed	231	Mountain Road	
Pump House	232	Mountain Road	
Ravencroft Theater	339	Mountain Road	
Serenity Maintenance Building	240	Mountain Road	
Sodexo Soccer Field Press Box	323	Mountain Road	
Petrocelli Hall	342	Mountain Road	
Maintenance Building	1628	NH RT. 119	
Cheney Hall	239	Pierce Drive	
Cheshire Hall**	215	Pierce Drive	
Business Center Modular	13	Pierce Drive	
Edgewood Hall**	37	Pierce Drive	
Emily Flint Campus Center	297	Pierce Drive	
EMT Squad Station	285	Pierce Drive	
Fieldhouse	40	Pierce Drive	
Glassblowing Studio	26	Pierce Drive	
Granite Hall**	267	Pierce Drive	
Grimshaw-Gudewicz Activity Center	112	Pierce Drive	
Marcucella Hall	287	Pierce Drive	
Monadnock Hall**	21	Pierce Drive	
Mountain View Apartments**	177	Pierce Drive	A - E Towers
Mt. Washington Hall**	245	Pierce Drive	
New Hampshire Hall**	263	Pierce Drive	
Northwoods Apartments**	103	Pierce Drive	F - K Tower
Recreational Hut	32	Pierce Drive	
Lakeview Townhouse #1**	44	Sawmill Road	#1 - #6
Lakeview Townhouse #2**	31	Sawmill Road	#7 - #12
Lakeview Townhouse #3**	40	Sawmill Road	#13 - #20
Lakeview Townhouse #4**	43	Sawmill Road	#20 - #28
Sawmill Apartments**	9	Sawmill Road	#1 - #15
Waste Water Treatment Plant	55	Water Street	
Franklin Pierce Fire Company	6	Water Street	

** are Residential Facilities

Note: Rt. 119, Mountain Road and University Drive, which are Public (ways) properties transverse our campus.

EMERGENCY RESPONSE AND EVACUATION PROCEDURES

Emergency Response

The University’s emergency response plan includes information about Incident Teams, University operating status parameters; incident priorities and performance expectations; shelter-in-place and evacuation guidelines; and local contingency and continuity planning requirements. University Departments are responsible for developing contingency plans

and continuity of operations plans for their staff and areas of responsibility. The University conducts numerous emergency response exercises each year, such as emergency evacuations, and tests of the emergency notification systems on campus with or without notice. These tests are designed to assess and evaluate the emergency plans and capabilities of the institution.

When a serious incident occurs that causes an immediate threat to the campus, the first responders to the scene are usually Franklin Pierce Campus Safety, Franklin Pierce Emergency Medical Technician Squad, Franklin Pierce Fire Company and Residential Life staff and they typically respond and work together to manage the incident. Depending on the nature of the incident, other Franklin Pierce departments and other local or federal agencies could also be involved in responding to the incident.

All members of the Franklin Pierce Community are notified on an annual basis that they are required to notify the Franklin Pierce Campus Safety Department of any situation or incident on campus that involves a significant emergency or dangerous situation that may involve an immediate or ongoing threat to the health and safety of students and/or employees on campus. Franklin Pierce Campus Safety Department has the responsibility of responding to, and summoning the necessary resources, to mitigate, investigate, and document any situation that may cause a significant emergency or dangerous situation. In addition, the Franklin Pierce Campus Safety Department has a responsibility to respond to such incidents to determine if the situation does in fact, pose a threat to the community. If that is the case, Federal Law requires that the institution immediately notify the campus community or the appropriate segments of the community that may be affected by the situation.

An Emergency Guide has been prepared and posted on the University web site to help prepare students, faculty and staff for response to possible emergencies.

Notification to the Franklin Pierce Community about an Immediate Threat

The Department of Campus Safety and the Marketing and Communications Office receive information from various offices/departments on campus, such as the Facilities, Grounds, Environmental Services, etc. If it is confirmed that there is an emergency or dangerous situation that poses an immediate threat to the health or safety of some or all members of the Franklin Pierce Community, Campus Safety and Marketing and Communications will collaborate to determine the content of the message and will use some or all of the systems described below to communicate the threat to the Franklin Pierce Community or to the appropriate segment of the community, if the threat is limited to a particular building or segment of the population. Campus Safety and Marketing and Communications will, without delay and taking in to account the safety of the community, determine the content of the notification and initiate the notification system, unless issuing a notification will, in the judgment of the first responders, compromise the efforts to assist a victim or to contain, respond to, or otherwise mitigate the emergency.

In the event of a serious incident that poses an immediate threat to members of the Franklin Pierce community, the University has various systems in place for communicating information quickly. Some or all of these methods of communication may be activated in the event of an immediate threat to the Franklin Pierce campus community. These methods of communication include network emails, emergency text messages that can be sent to a phone (all students are automatically signed up for this service and individuals can sign up for this service on the Franklin Pierce intranet (eRaven) web site <http://eraven.franklinpierce.edu/>, referred to as FPalerts), and a single tower emergency system. If any of these systems fail or the University deems it appropriate, in person communication may be used to communicate an emergency. The University will post updates during a critical incident on the intranet web site at <http://eraven.franklinpierce.edu/>.

Follow-up information will be distributed using some or all of the identified communication systems (except fire alarm).

Members of the larger community who are interested in receiving information about emergencies on campus should sign up for the emergency text message system, know as FPalerts and should use the intranet (eRaven) web site: <http://eraven.franklinpierce.edu/> and the (603)899-4210 line for obtaining updates in the event of an emergency on campus.

EVACUATION PROCEDURES

Evacuation Drills are coordinated by Campus Safety and Residential Life
All residence halls evacuation procedures will be outlined with the residents during the first hall/area meeting.

Evacuation drills will be conducted in all residence halls each semester, which will not be announced in advance.

All students should familiarize themselves with the evacuation card on the back of their room door and with all exits from the building in order that the nearest safe exit will be properly chosen in an emergency.

Emergency Action Plan

- If you discover a fire or smell smoke, sound the building fire alarm and exit the building immediately. Know the location of the fire stations and how they operate. Do not attempt to fight a fire yourself due to the hazards associated with the products of combustion and the threat of a spreading fire.
- Upon hearing a building alarm signal, which may be a bell, horn or a voice message, depending on the building you are occupying, immediately begin evacuation and close the doors behind you. Use the nearest safe exit, but **do not use the elevator.**
- Remain calm
- Leave the building immediately and assemble in an area established by the Emergency Plan, where you will not hinder the approaching firefighters and apparatus.
- If caught in smoke or heat, stay low where the air is generally better and you should attempt to reach a safe exit or area of refuge (i.e. bathroom or shower stall).
- Know the location of all exits from your building. All exits in university facilities are properly marked with illuminated **EXIT** signs.
- If unable to leave your room due to heat or heavy smoke in the hallway or due to a physical disability, telephone the Franklin Pierce Communication Specialist (extension **5555** on campus or from an off-campus phone: (603)899-**5555**) and give your **exact location** so firefighters can be directed to you.
- Always use the emergency access number to reach University Campus Safety in an emergency (extension **5555** on campus or from an off-campus phone: (603)899-**5555**).

- Do not re-enter the building

AUTHORITY AND RELATIONSHIP WITH LAW ENFORCEMENT AGENCIES

The officers of the Franklin Pierce Department of Campus Safety, acting as agents of the University, are authorized to enforce policies and regulations of the University and to refer those individuals in violation to the Director of Campus Safety and the Director of Residence Life and Community Standards and Retention to be adjudicated in the university's judicial system. Officers do not have sworn police powers.

The Franklin Pierce University Department of Campus Safety maintains a professional relationship with the Rindge Police. Meetings are held between the leaders of these agencies on both a formal and informal basis. Campus Safety strongly encourages victims or witnesses of crimes to report any incident to Campus Safety and the appropriate outside law enforcement agency in a timely manner; Campus Safety Officers will attempt to facilitate this communication. The officers of Campus Safety and Rindge Police communicate regularly on the scene of incidents that occur in and around the campus area. The Campus Safety Staff work with the members of the Rindge Police Department when incidents arise that require joint investigative efforts, resources, crime related reports and exchanges of information, as deemed necessary. There is a written Statement of Principle between Franklin Pierce Campus Safety and the Rindge Police Department.

REPORTING CRIMES AND EMERGENCIES

Community members, students, faculty, staff, visitors and guests are encouraged to report all crimes and public safety related incidents to the Department of Campus Safety in a timely manner. Crimes should be reported to Campus Safety for purposes of assessing the crime for distributing a potential timely warning notice and for disclosure in the annual crime statistics. There is a dispatcher on duty 24 hours a day to answer your call. To report a crime you should contact the Franklin Pierce Department of Campus Safety at (603)899-4210 - (non-emergencies), (603)899-5555 - (emergencies only), or by using the Blue Light telephones located at the entrances of Residential Halls, walkways or by some buildings. Any suspicious activity or person seen in the parking lots or loitering around vehicles, inside buildings or around the Residential Halls should be reported immediately to Campus Safety. In addition you may report a crime to the following areas:

Zaayah Waite, Vice President of Student Affairs and Dean of Students	(603)899-4162	Peterson Manor – Second Floor
Heather Ventresco, Director of Residence Life and Community Standards	(603)899-4178	New Hampshire Hall – Residential Life Office
Kristofer Towle Director of Campus Safety	(603)899-4102	St Peter’s Building
Erica Peery, Director of Health Services	(603)899-4130	Granite Hall – Health Center
Nicole Newell, Director of Outreach and Counseling Center	(603)899-4130	Granite Hall – Outreach Center
Alexander Jenkins-Evans Director of Human Resources	(603)899-4077	DiGregorio Building – Bottom Floor
All Resident Directors	(603)899-4076	New Hampshire Hall – Residential Life Office
Crime Stoppers Watch Line (not monitored for immediate response)	(603)899-4100 Ext. 2795 (CSWL)	

Or any other Franklin Pierce Faculty or Staff member who are designated as a Campus Security Authority

Members of the university community and their guests have the option to also report emergencies and suspected criminal/suspicious activity to the Rindge Police Department (603)899-5009). The Department of Campus Safety maintains a working relationship with the Rindge Police Department.

Confidential reporting is offered to any victim of a crime who wishes not to pursue action within the University System or the criminal justice system.

If you are a victim of a crime and do not wish to pursue action within the University system or the legal system, you may still want to consider making a confidential report. While this report will keep your identity confidential, it will assist the University in taking steps to ensure your safety and the safety of others in the future. Reports filed in this manner are counted and reported in the University’s Annual Security Report.

Understanding that victims may not want to report an incident to a safety officer, victims may report a crime on a confidential basis to any of the above aforementioned staff.

A confidential “Third Party Report” with information regarding the incident will be completed; however no names or identifying information will be used without the consent of the victim. The “Third Party Report” will be forwarded to the Director of Campus Safety. No follow-up or investigation will be conducted without the consent of the victim.

Although Outreach Counseling Center personnel and pastoral counselors when acting as such, are not considered to be a campus security authority and are not required to report crimes for inclusion into the annual disclosure of crime statistics. As a matter of policy, they are encouraged; if and when they deem it appropriate, to inform persons being counseled of the procedures to report crimes on a voluntary basis for inclusion into the annual crime statistics.

HOW TO REPORT A CRIME

If you witness a crime or wish to report an emergency, call:

Immediate Campus Safety Service	899-5555
All Other Calls	899-4210
Crime Stoppers Hotline (not monitored for immediate response)	
899-4100 Ext 2795	

Or report in person at the St. Peter's Building on University Drive. You also have the option to call:

Rindge Police	899-5009
Police/Fire/Ambulance	911

When reporting a crime or emergency;

Remain calm.

Give the location of the incident - building name, **room** number, and parking lot name.

Identify yourself and give a **call back telephone number**.

Your identity will remain confidential, if you wish, however, it is important we be able to contact you if we need additional information.

State the incident you are reporting i.e. theft, motor vehicle accident, medical emergency, etc.

Describe the scene - who and how many people are there, if anyone is hurt or needs medical treatment, description of subjects involved, etc.

State the subject's direction of flight, if applicable.

Stay on the phone until the dispatcher has recorded all of the information.

- When a crime or other serious incident is reported, a Campus Safety Officer will be dispatched to the scene to render assistance and investigate the incident. The Rindge and/or State Police may also be contacted if circumstances dictate. If the responding officer determines the situation presents a significant or imminent danger to the Franklin Pierce Community, s/he will contact the Director of Campus Safety and/or the Dean of Student Affairs to provide a timely warning to the Community.

- Response to fire emergencies is provided by the Franklin Pierce Fire Company, which is housed on campus, and the Rindge Fire Department. The Franklin Pierce Fire Company under the direction of the Director of Campus Safety obtains its authority from the Rindge Fire Chief and is staffed by student volunteers. The Franklin Pierce Fire Company responds to all fires, fire alarms and hazardous materials incidents with the Rindge Fire Department. The volunteers attend NH certified training courses to become Firefighter I certified.
- The Franklin Pierce EMS Squad, under the direction of the Director of Health Services, responds to medical emergencies. Nationally registered student volunteer EMTs are available for emergency medical assistance during hours when the Health Center is closed. Rindge Rescue provides emergency services when needed and is the primary response unit when the EMS Squad is out of service.
- The Jaffrey-Rindge Memorial Ambulance Squad provides emergency transportation to the Monadnock Community Hospital located in Peterborough, NH.
- Incidents identified as Residence Life, Environmental Services or Facilities Departments related, will be referred to the on-call personnel in the specific department needed.

CRIME AWARENESS AND PREVENTION PROGRAMS

During fall orientation, a Rindge Police representative, a Rindge Fire representative and Director of Campus Safety speak to the students about NH laws that may pertain to them, personal security, the importance of securing their residence hall and crime that takes place on campus. The residential life staff discusses evacuation procedures for an emergency evacuation from their halls.

Crime Prevention Programs and Sexual Assault Prevention Programs are offered on a continual basis by Campus Safety and Residential Life Staff.

Periodically during the academic year Rindge Police are invited to talk to different student groups about a variety of topics which include personal safety, drugs/alcohol abuse, crime prevention, in cooperation with other university organizations and departments, present crime prevention awareness sessions on sexual assault (rape and acquaintance rape), Rohypnol abuse, theft, and vandalism, as well as educational sessions on personal safety and residence hall security.

A common theme of all awareness and crime prevention programs is to encourage students and employees to be aware of their responsibility for their own security and the security of others and that it takes the whole community's efforts to make Franklin Pierce a safe community to live and learn in.

Information is released to the university community through computer memos sent over the university's electronic mail system, a voice mail broadcasting system and phone texting to those which are participating in the FP alert program.

TIMELY WARNINGS

In compliance with the Jeanne **Clery Disclosure of Campus Security Policy and Campus Crime Statistics Act** (Clery Act), the Franklin Pierce University Department of Campus Safety or a designee will post **timely warnings** as soon as pertinent information is available, in a manner that withholds the names of the victims as confidential, and with the goal of aiding in the prevention of similar occurrences to the University Community to notify members of the community of crimes, identified by the Clery Act, which occur within the campus geography. Having knowledge of such crimes will assist community members in making informed decisions about their personal safety and in preventing similar crimes from occurring. These warnings will be posted if a Clery Act crime on/off campus constitutes a serious **ongoing or continuing** threat to the community. These crimes may be reported to Campus Safety, a campus security authority, or to the Rindge Police Department. In addition, crimes exclusively reported to a pastoral or professional counselor are exempt from Timely Warnings.

The decision to issue a timely warning shall be decided on a case-by-case basis in compliance with the Clery Act. The decision is made by the Vice President of Student Affairs in conjunction with the Director of Campus Safety, or designee, considering all available facts, whether the nature of the crime is considered a serious or on-going threat to the community and the possible risk of compromising law enforcement efforts.

The Department of Campus Safety may not issue timely warnings if:

- The subject(s) is apprehended and the threat of imminent danger to the Franklin Pierce University community has been mitigated by the apprehension.
- If a report was not filed with Campus Safety or Campus Safety was not notified by campus security authorities in a manner that would allow the department to post a “timely” warning to the community. Unless there are extenuating circumstances, a report that is filed more than five days after the date of the alleged incident may not allow Campus Safety to post a “timely” warning to the community. This type of situation will be evaluated on a case-by-case basis.

A timely warning and updates may be distributed to the campus through any one or more of the following mechanisms:

eRaven: The Franklin Pierce University intranet website at

<http://eraven.franklinpierce.edu/>

University email: FP email and text messaging system alerting students, faculty, and staff.

Fliers: Posted on bulletin boards in academic buildings, residence halls, and administrative buildings.

Campus Safety webpage: <https://www.franklin Pierce.edu/student-experience/safety-security/index.html>

Franklin Pierce University Website: <http://www.franklin Pierce.edu/>

Franklin Pierce University Mass Media: FPTV-25 or WFPLP 105.3FM

A copy of the timely warning will be filed in the corresponding case file.

The Department of Campus Safety may also issue “**safety alerts**,” when necessary, to apprise the Franklin Pierce community of safety issues and concerns. These “safety bulletins” will include safety tips and recommendations to follow so community members can make informed decisions about personal safety.

DAILY CRIME LOG

The Department of Campus Safety maintains a public daily crime log containing information on all crimes reported to Campus Safety to include the nature, date, time, and general location, and disposition of each complaint (if known). The log does not include information that is prohibited by law, would jeopardize an ongoing criminal investigation, pose a risk to the safety of an individual, cause a suspect to flee or evade detention, may result in the destruction of evidence, or would jeopardize the confidentiality of the victim. The log is maintained for the most recent 60-day period and is accessible upon request in the Campus Safety office located in the St. Peters Building at 40 University Drive Rindge, NH. The log will be made available during normal business hours Monday-Friday 8:00am-5:00pm.

CAMPUS SECURITY AUTHORITIES

Franklin Pierce University realizes that while the departments of Campus Safety and Residential Life are the primary means by which violations of codes, policies or guidelines may be reported, our community is larger and more diverse than just these two departments. Taking this into consideration and in compliance with the Jeanne Clery Act the Department of Campus Safety has tasked a wide range of community members to assist the students, faculty and staff in reporting violations brought to their attention. Individuals filling this purpose are recognized as Campus Security Authorities.

While not limited to incidents requiring documentation under the Clery Act, the Department of Campus Safety trains faculty and staff in these requirements. Community Assistants, Peer Leaders, Student Safety Officers, as well as members of the Fire and Emergency Medical services are trained to the same standard. Each group serves and interacts with different constituencies providing all students multiple avenues to access University services.

Training that addresses the seven primary types of crimes that are required for reporting; hate and bias crimes; confidential reporting processes and resources available are conducted on a recurring basis. This training is offered at varied times both on campus and at satellite centers as well. Notification of training is made by University email to reach the largest possible number of community members.

A letter is sent to the Campus Security Authority and members of the community annually reminding them of their obligation to report any and all crimes to the Director of Campus Safety for the purposes of counting and reporting in the Annual Security and Fire Safety Report.

MISSING STUDENTS

Franklin Pierce students have complete freedom to leave the campus when they wish, for the length of time they wish, without having to notify a University official. It is noted that the student is still responsible for all academic and financial obligations associated with enrollment until such time as an official withdrawal or leave of absence is approved. Franklin Pierce University also has the obligation to ensure the safety and security of its students and thus has reasonable concern for a student reported as missing.

Each student living in on-campus housing has the option to register a confidential contact person to be notified in the case the student is determined to be missing. Only authorized University officials and law enforcement officers in furtherance of a missing person investigation may have access to this information. Students may register their confidential contact information at

<http://eraven.franklinpierce.edu/s/dept/reslife/student/ConfidentialContact/ConfidentialContact.htm>

Students should be aware regardless if a confidential contact is provided local law enforcement will be advised of any missing student.

Students should be aware that in the case of a missing student under the age of 18 who is not on record as an emancipated minor a parent or guardian of the missing student will be notified.

Report of a missing student

1. Any person or office receiving a report of a possible missing student must relay that information to any of the following people/offices **immediately, along with being referred to Campus Safety:**

Department of Campus Safety	899-4210/5555
Kristofer Towle, Director of Campus Safety	899-4102
Zauyah Waite, Vice President for Student Affairs	899-4162
Heather Ventresco, Director of Residence Life and Community Standards	899-4178
All Resident Directors	899-4176

Or any other Franklin Pierce Faculty or Staff Member

2. The Director of Campus Safety, in cooperation with the Director of Residence Life and Community Standards Office, shall investigate the report.
3. It shall be the determination of the Director of Residence Life and Community Standards to contact the student's parent and or legal guardian.

4. Once a student has been determined to be missing for 24 hours or more the Director of Campus Safety, Director of Residence Life and Community Standards or their designee will contact local law enforcement, Confidential Contact, Parent or Guardian if under the age of 18 about the student. Information will be provided to assist law enforcement with their investigation and attempts to locate the missing student.
5. On reporting to law enforcement, University representatives will notify the campus community by standard means to solicit information and enlist their aid. Information gathered will be shared with law enforcement if possible maintaining any level of anonymity as requested by the party providing it.

LOCKOUTS AND LOST KEYS

Students and employees occasionally get locked out of rooms and offices.

Students which are locked out of their residences should call (603) 899-4210 and Residential Life or Campus Safety Staff will respond to assist students into their room.

Faculty and Staff which are locked out of their office or classroom should call (603) 899-4210 and a Campus Safety officer will respond to assist.

In the case of a lost key, during normal business office hours (M-F 8am – 4:30 pm) students should notify the Residential Life Office in the lower level of the New Hampshire Hall for a lock change and replacement key. Faculty and staff members should notify their supervisor or department/division head.

CAMPUS SAFETY AND FACILITY ISSUES

Facility problems affecting the safety and security of the campus are given high priority. Facilities personnel are on-call around the clock to rectify problems that present an immediate compromise to safety. As part of their regular patrols Campus Safety officers and Residence Life staff document and report facility needs. The staffs in both areas work closely with Facilities and Environmental Services personnel to maintain a pleasant environment for living, learning and working.

VIDEO RECORDING

The University has a limited number of video recording devices on campus which are utilized for reviewing only. Video recording devices are not monitored at all times.

CRIMINAL ACTIVITY OFF CAMPUS

Franklin Pierce University does not have student organizations (Fraternity and Sororities) operating off campus. The Department of Campus Safety does not provide policy/law enforcement services to off-campus residences or off-campus activities recognized by the University. Criminal activity at these sites is handled by the local municipal law enforcement agency. However, any Franklin Pierce Student that is involved in an off-campus offense is routinely communicated to Campus Safety. A report is generated and referred to the Director of Residence Life and Community Standards for disposition in accordance with the Student Code of Conduct.

ACCESS TO CAMPUS FACILITIES AND RESIDENCE HALLS

Franklin Pierce buildings, grounds and parking areas are private property; however, the roadways and parking lots are public ways, under NH state law. Community members may use campus facilities for advertised public events or as members of the University's athletic complex. Students' guests must register their guests online at the following link: <https://www.franklinpierce.edu/student-experience/student-affairs/conduct/guest-passes.html> Persons visiting a specific department or facility should stop at Campus Safety to obtain a visitor pass. All vendors must be registered at Campus Safety with the approval of Student Activities or the host department. Unauthorized persons found on campus will be deemed trespassers and may be subject to criminal prosecution.

Administrative buildings are secured at the earliest possible hour, given their projected use each day. Exterior doors to residence halls are locked 24 hours a day, except those residence halls which also house meeting space or offices, which are unlocked during times the area is in use or the office(s) are open. Campus Safety Officers and Residence Life staff periodically patrol campus to check for propped doors, as well as other safety issues.

Some areas on campus, such as computer rooms and studios, are restricted from access without authorization. Authorization must be in writing from the person in charge of the area and must be on file at the Campus Safety Office for these areas prior to access being granted. Valid Franklin Pierce University identification is necessary to confirm authorization for access. Campus Safety reserves the right to give or deny access to any area in case of emergency.

Faculty, staff and students are required to carry their Franklin Pierce ID card at all times while on campus. The ID is required to check materials from the library, purchase items from the University bookstore or pub through a 'Raven' account, eat in the dining commons (for students on the meal plan) and use University athletic facilities. Identification must also be presented to a Campus Safety Officer or other University official, upon his/her request in accordance with the Student Code of Conduct. Franklin Pierce ID cards are issued and/or validated at registration each semester and replacements can be obtained throughout the year at the Campus Safety Office for a fee charged to the student's account. Lost student ID cards may be replaced by a \$50 fee charged to the student's account.

Access to residence halls are restricted to residents, their approved guests and other approved members of the University community. Residents gain entry by swiping their tap cards at the card access readers where applicable. Residents are cautioned against permitting strangers to enter the buildings and are urged to require individuals seeking entry to use their access card where applicable.

POSSESSION, USE AND SALE OF DRUGS

Possession and use of non-prescribed drugs is incompatible with the educational process and inconsistent with the purposes of the University community. Student Code of Conduct prohibits the possession of illegal drugs, drug paraphernalia, and the sale of drugs, which may result in the separation from the University and prosecution.

Use, possession, or distribution of narcotics or other controlled substances, except as expressly permitted by law (e.g. prescription drugs) are forbidden. University policies and regulations regarding narcotics and controlled substances shall be strictly observed and enforced.

Drug related devices are prohibited on University premises in accordance with the policies and regulations of the University.

Detection of the use or possession of a controlled substance will result in the Rindge Police Department being notified of the incident.

POSSESSION, USE AND SALE OF ALCOHOL

Franklin Pierce prohibits alcoholic beverages in all public areas of the campus, including lounges, corridors of residence halls and outdoor areas, unless special permission is received for a particular function. Traditional and wellness residence areas Granite, New Hampshire, Mt. Washington, Cheshire, Edgewood, and Monadnock Halls are designated as tobacco and alcohol free.

The University prohibits common sources of alcohol. Common source is defined as a large amount of alcohol present which is in excess, or beyond a reasonable amount for the number of people present who are 21 years of age or older. Common sources include, but are not limited to, kegs, Jell-O shots, beer balls, and around the world parties. This regulation is due to the irresponsible consumption and associated negative behavior. Further, social gatherings (parties) where money is collected or tickets are sold are prohibited. The funnels, alcohol game paraphernalia, taps, kegs, pong tables, etc. will be confiscated and not returned.

As a member of the Franklin Pierce community, students reside in the State of New Hampshire, and therefore are responsible for knowing and abiding by all state laws. State law forbids the possession and/or consumption of alcoholic beverages as a minor. No sales agent, nor any other person, shall sell or give away or cause or permit or procure to be sold, delivered or given away any liquor or beverages to a person under the age of 21 years, or a person under the influence of liquor (NH RSA 179:5). Students over 21 years of age are subject to prosecution if they sell or give alcoholic beverages to a minor. RSA 265:821 is amended to provide that a driver under the age of 21 years, with a Blood Alcohol Content (BAC) of 0.02 or more may be charged with DWI. For an average person, 0.02 BAC would be less than the equivalent of one beer or light drink. Anyone under the age of 21, which has consumed an alcoholic beverage, is subject to arrest for internal possession. The Alcohol and Other Drugs Committee is assembled periodically to review these and other related regulations. The Alcohol and other Drugs Committee recommends to the Vice President of Student Affairs the appropriate campus policies and programs.

The University has adopted the following guidelines:

The University has the responsibility to exercise prudent control over the use of alcohol on and off campus at University-sponsored events.

Food and non-alcoholic beverages of sufficient quantity must be available whenever alcoholic beverages are served at events on or off campus.

Individuals and/or sponsors of activities, events, or parties where alcohol is served are responsible for clean up and damage.

No alcoholic beverages are permitted in or out-of-doors, except in the Raven's Nest and private residence hall rooms (that are not in designated alcohol-free residence halls).

Special permission must be obtained for special functions in other locations (on or off campus) from the appropriate member of the Senior Staff.

Incident reports from the Department of Campus Safety indicate if the incident is alcohol related and are reported to the Director of Residence Life and Community Standards.

In promoting University events, alcoholic beverages may not be mentioned in advertising material.

Specific alcohol policies, including sanctioning can be found in the Student Code of Conduct, which is accessible on the Franklin Pierce University web site:
www.franklinpierce.edu.

DRUG-FREE CAMPUS PROGRAM

As a member of the Network of Colleges and Universities Committed to the Elimination of Drug and Alcohol Abuse, Franklin Pierce has adopted and implemented a drug abuse program.

This program is directed to all students and employees and includes:

Policy - Annual notices of standards of conduct prohibiting unlawful possession, use, and distribution of illicit drugs and alcohol on University property and at University functions.

Enforcement - Sanctions that will be imposed by the University and applicable legal sanctions under the local, state and federal law.

Prevention and Education - Programs on the health risks associated with the use of drugs and the abuse of alcohol.

Treatment and Referral Services - Programs in alcohol or drug counseling, treatment, and rehabilitation are available through the Outreach Center and the Employee Assistance Program (EAP) through Human Resources.

The following link provides information regarding standards of conduct that clearly prohibit the unlawful possession, use, or distribution of illicit drugs and alcohol by students and employees on University property or as part of University activities, and describes the applicable legal sanctions, associated health risks, and support programs and services available to employees and students:

<https://www.franklinpierce.edu/student-experience/student-affairs/conduct/index.html>

**DISCLOSURE TO ALLEGED
VICTIMS
OF CRIMES OF VIOLENCE OR
NON-FORCIBLE SEX OFFENSES**

Franklin Pierce University will upon written request, disclose to the alleged victim of a crime of violence, or a non-forcible sex offense, the results of any disciplinary proceedings conducted by the University against the student who is the alleged perpetrator of the crime or offense. If the alleged victim is deceased as a result of the crime or offense, the next of kin of such victim shall be treated as the alleged victim for purposes of this paragraph.

Release of any information on the outcome of any case is the responsibility of the Director of Residence Life and Community Standards (603)-899-4178.

FIREARMS, FIREWORKS & OTHER WEAPONS

Possession or use of any type of firearms, handguns or other weapons, BB guns, pellet guns, sling shots, swords, martial arts weapons, explosives including but not limited to firecrackers/fireworks, sparklers on University property is not allowed, and violations would be viewed as a serious offense. (On duty law enforcement officers are exempt from this prohibition.)

Any weapons confiscated by Campus Safety will not be returned and will be destroyed or turned over to the Rindge Police Department. Anyone wanting the return of their weapon will have to make arrangements with the Rindge Police Department with the understanding the weapon will be stored off campus.

DATING VIOLENCE, DOMESTIC VIOLENCE, SEXUAL ASSAULT, AND STALKING POLICIES AND PROCEDURES

Franklin Pierce University prohibits the crimes of sexual assault, domestic violence, dating violence and stalking. The University educates the student community through programs to prevent sexual assault, domestic violence, dating violence and stalking through mandatory freshman orientations each fall. The Campus Safety and Residential Life Departments offers ongoing prevention and awareness programs of sexual assault, domestic violence, dating violence and stalking education and information programs to University students and employees upon request. Literature on sexual assault, domestic violence, dating violence and stalking education and risk reduction is available through the Office of Health Services and the Out-Reach Counseling Center.

If you are a victim of sexual assault, domestic violence, dating violence or stalking at this institution, your first priority should be to get to a place of safety. You should then obtain necessary medical treatment. The Franklin Pierce Campus Safety Department strongly advocates that a victim of sexual assault, domestic violence, dating violence or stalking report the incident in a timely manner. Time is a critical factor for evidence collection and preservation. An assault should be reported directly to a Campus Safety officer and/or to a Campus Security Authority representative. Filing a report with a Campus Safety officer will not obligate the victim to prosecute, nor will it subject the victim to scrutiny or judgmental opinions from officers.

Filing a Campus Safety report will:

- ensure that a victim of sexual assault, domestic violence, or dating violence receives the necessary medical treatment and tests, at no expense to the victim;
- provide the opportunity for collection of evidence helpful in prosecution, which cannot be obtained later (ideally a victim of sexual assault should not wash, douche, use the toilet, or change clothing prior to a medical/legal exam);
- assure the victim has access to free confidential counseling from counselors specifically trained in the area of sexual assault crisis intervention.

When a sexual assault, domestic violence, dating violence or stalking victim contacts the Campus Safety Department (603-899-4210), the Rindge Police Department will be notified *only at the request of the victim*. A representative from the Office of Residential Life will be notified.

The victim of sexual assault, domestic violence, dating violence or stalking will be provided information in writing about –

- A. the importance of preserving evidence that may assist in proving that the alleged criminal offense occurred or may be helpful in obtaining a protection order;
- B. How and to whom the alleged offense should be reported; (indicate that it can be reported to the Title IX Coordinator).
- C. Options about the involvement of law enforcement and campus authorities, including notification of the victim's option to—
 - a. Notify proper law enforcement authorities, including on-campus and local police;
 - b. Be assisted by campus authorities in notifying law enforcement authorities if the victim so chooses
 - c. Decline to notify such authorities
- D. Where applicable, the rights of victims and the institution's responsibilities regarding orders of protection, "no contact" orders, restraining orders or similar lawful orders issued by a criminal, civil, or tribal court or by the institution.

The victim of sexual assault, domestic violence, dating violence or stalking may choose for the investigation to be pursued through the criminal justice system and the University Judicial System, or only the latter. A University representative from the Campus Safety Department or the Office of Residential Life will guide the victim through the available options and support the victim in his or her decision. Various counseling options are available from the University through the Student Health Center, the Outreach Counseling Center, The Women's Crisis Center (on campus), University Ministries or Employee Assistance. Counseling and support services outside the University system can be obtained through the Monadnock Center for Violence Prevention at 1-888-511-6287 or 603-352-3782.

University disciplinary proceedings are detailed in the *Student Code of Conduct* (<http://eraven.franklinpierce.edu/s/dept/judicialaffairs/index.htm>). The *Code of Conduct* provides, in part, that the accused and the victim will each be allowed to choose one person from within the University community to accompany them throughout the hearing. Both the victim and accused will be informed of the outcome of the hearing simultaneously in writing. A student found guilty of violating the University policy may be suspended or expelled from the University for the first offense. Victims have the option to change their academic and/or on-campus living situations after an alleged sexual assault, domestic violence, dating violence or stalking if such changes are reasonably available.

Guidelines for Immediate Care

The following guidelines are for a person who has been sexually assaulted, abused, or raped or is a victim of domestic violence, dating violence or stalking. The primary

concern of the caregiver is the emotional well-being of the survivor. Circumstances and survivor needs vary greatly. This format is a guide while keeping in mind the needs of the survivor as the primary focus.

- The survivor should notify Campus Safety, Student Affairs (Residence Life), Health Services, Center for Outreach Education or Human Resources of the alleged assault.
- Immediate medical needs will be assessed. If emergency medical assistance is required; the caregiver may do either of the following;
 - Notify Dispatch at 899-4210 to page the on-duty EMT, or
 - request transportation to the emergency room.
- The caregiver will notify his/her immediate supervisor of the incident.
- The survivor will be informed of his/her right to report the incident to the Rindge Police Department. If the victim wishes, Campus Safety will assist in connecting them to Rindge Police Department.
- The caregiver will provide the following options to the survivor, while respecting his/her right to choose the type and extent of medical and psychological intervention;
 - Encourage the survivor to seek treatment at an emergency room for presence of sexually transmitted disease and/or pregnancy; evaluate and treat injuries; and collect evidence.
 - The survivor may choose to seek treatment at the Health Center in lieu of the emergency room; however they will not collect evidence.
 - Encourage the survivor to contact either the Outreach Center at 899-4130 or the Monadnock Center for Violence Prevention at 1-888-511-6287 or 603-352-3782.
 - The survivor may wish to have no medical or psychological evaluation.
- If the survivor chooses to be treated at the emergency room, s/he;
 - Should be advised not to smoke, eat or drink anything.
 - Should not shower, douche, brush teeth, rinse mouth or wash any other part of the body.
 - Should bring a change of clothes.
- The survivor should be advised not to wash clothes or bedding that may contain physical evidence.
- With the survivor's consent, the Director of Residence Life and Community Standards, with the assistance of Campus Safety, will proceed with an investigation of the incident. Information regarding the survivor and the incident will be provided on an "as needed" basis only to those persons directly involved in the incident,

investigation or judicial process.

- If the survivor and the accused live in the same residence hall or share classes, the survivor will be given the option to relocate to another facility or class when such option is reasonably available, pending campus judicial action.
- The survivor and accused have the same rights during all phases of the campus judicial process.
- Both the accuser and the accused will be simultaneously informed of the outcome of any campus disciplinary proceeding involving sexual assault, by the Director of Residence Life and Community Standards.
- Sanctions per Student Code of Conduct for sexual assault (sexual misconduct) can include disciplinary action up to and including suspension and expulsion.

SEXUAL OFFENDER INFORMATION

The Rindge, NH Police Department is responsible for maintaining a current list of sexual offenders, required to register in the Town of Rindge.

Any interested party may view the list at the Police Department located at:

273 Main Street
Rindge, New Hampshire
(603)-899-5009

Or the State of NH web site:

[Business.nh.gov/nsor/](https://business.nh.gov/nsor/)

CRIME AWARENESS AND PREVENTION PROGRAMS

The Franklin Pierce University believes that crime awareness is the key to crime prevention. Campus Safety and Residential Life provide the following services and programs to educate community members:

Orientation program on safety awareness for incoming Freshmen and Transfer students

This program is conducted at the beginning of the Fall and Spring semesters for incoming Freshmen and Transfer students. It provides an introduction to the Department of Campus Safety and its services and basic crime prevention information.

R.A.D. (Rape Aggression Defense) Program for Women

R.A.D. is a 12-hour self-defense program for women only. This program is provided at no charge. Classes will be scheduled throughout the academic year.

Safety and Health Awareness Fair

The Department invites local law enforcement, fire service and health agencies to provide information regarding crime awareness and general health and well-being. The Fair usually takes place during October, which is national Crime Prevention Month.

Training for Residence Life staff

Campus Safety personnel participate in and provide training during Community Assistant orientation and at various times during the year. Training has included crisis management, alcohol and drug awareness and crisis intervention.

Rape Awareness Programs

Programs on rape awareness and romantic behavior are conducted through the Residential Life Department staff advise the students what to do should they become a victim. An introduction to the R.A.D. class is included.

Drug and alcohol awareness programs

Campus Safety personnel are involved in Residence Life programs regarding drug and alcohol awareness.

Fire safety programs

Use of fire extinguishers, how to evacuate buildings, periodic safety checks of residences, and fire training for interested students.

Periodic crime and campus alerts

Crime Alerts are issued when a crime or pattern of crimes or other activity has occurred which present an immediate and significant danger to the Community. Crime Alerts are sent out as a “Raven Flash” e-mail, are posted on those areas affected and notification made to Residence Life staff, if applicable.

Campus Alerts are issued to advise the Community of relevant information in other areas of concern, i.e. weather or storm advisories, traffic advisories, potential or real power outages, etc.

Campus Safety Watch Line

Persons wishing to provide anonymous information regarding an incident may call the Watch Line at 899-4100/2795 (CSWL). Messages are picked up during the normal business day only.

Operation Identification

Residential Life and Campus Safety provide this as a hall program, which allow students to mark their personal property with an electric etching machine to discourage theft

Driver Safety Course

An 8-hour classroom instruction with a road test is provided at no cost for members of the University community wishing to operate University vehicles.

Personal Safety Escort Service

Personal escorts across campus are provided as well as a program to make the student body more aware of their personal safety and surroundings.

Fingerprinting

For those community Members that need to provide fingerprints to prospective employers, security clearances, student teaching positions or other purposes, the Department of Campus Safety offers fingerprinting services. Please call for an appointment.

Blue Light Phones

Emergency phones are located around the University to assist you in times of emergencies. They have a red button on them to activate the phone to automatically call Campus Safety 24-hour Dispatch (5555). The phones are located at:

Campus Center—by north side of the Bookstore

Granite Hall—by the main entrance

New Hampshire Hall—by the main entrance

Mt. Washington Hall—by the main entrance

Cheshire Hall—by the entrance on the parking lot side

Mt. View—by the north entrance to the hallway to the laundry room

Northwoods—by the north entrance to the hallway to the laundry room

Edgewood Hall—by the Southside entrance

Monadnock Hall—by the Westside entrance

DiGregorio—by the parking lot entrance

Lake View Townhouses—between buildings 1 and 2 by the bus stop and on the pathway from Lake View to the Athletic Fields

Sawmill Apartments—at the main entrance, parking lot side

Lakeside—the front of the Boathouse

In addition to the ‘Blue Light’ Phones there are phones in each elevator and around the campus that can be dialed into or automatically will dial campus safety.

They are located at:

Adventure Recreation Hut (Inside)

Northfields—7 phones throughout the structure

Campus Center—4 phones throughout the structure

Cheshire Hall—ground floor and elevator

Edgewood - first floor

Fieldhouse—inside by main entrance

Glass Blowing Shed—inside

Granite Hall—first floor

Library—Archives room, first and second floor and elevator

Marcucella Hall—first and second floor labs, first floor by rear entrance and elevator

Monadnock—by Stained Glass Studio

Mt. View—outside classroom

New Hampshire—by laundry room and second floor

Mt. Washington—on second floor

Northwoods—outside of classroom

Peterson Hall—Alumni Lounge and elevator

Petrocelli Hall—Inside main entrance

St. Peter’s—front lobby

Warehouse—back parking lot side

REPORTABLE CRIMES AND DEFINITIONS

Murder and Non-Negligent Manslaughter:

The willful (non-negligent) killing of one human being by another.

Manslaughter by Negligence:

The killing of another person through gross negligence.

Sexual Assault:

Any sexual act directed against another person, without the consent of the victim, including instances where the victim is incapable of giving consent.

Rape: The penetration, no matter how slight, of the vagina or anus with any body part or object, or oral penetration by a sex organ of another person, without the consent of the victim.

This offense includes the rape of both males and females.

Fondling: The touching of the private parts of another person for the purpose of sexual gratification, without the consent of the victim, including instances where the victim is incapable of giving consent because of his/her age or because of his/her temporary or permanent mental incapacity.

Incest: Sexual intercourse between persons who are related to each other within the degrees wherein marriage is prohibited by law.

Statutory Rape: Sexual intercourse with a person who is under the statutory age of consent.

Robbery:

The taking or attempting to take anything of value from the care, custody, or control of a person or persons by force or threat of force or violence and/or by putting the victim in fear.

Aggravated Assault

An unlawful attack by one person upon another for the purpose of inflicting severe or aggravated bodily injury. This type of assault usually is accompanied by the use of a weapon or by means likely to produce death or great bodily harm. (It is not necessary that injury result from an aggravated assault when a gun, knife, or other weapon is used which could and probably would result in serious personal injury if the crime were successfully completed.)

Include as Aggravated Assaults:

Assaults or attempts to kill or murder

Poisoning (including the use of date rape drugs)

Assault with a dangerous or deadly weapon

Maiming

Mayhem

Assault with explosives

Assault with disease (as in cases when the offender is aware that he or she is infected with a deadly disease and deliberately attempts to inflict)

the disease by biting, spitting, etc.)

Firearm. Any aggravated assault in which a firearm of any type is used or threatened to be used

Knife or Cutting Instrument. Assault wherein knives, razors, scissors, bottles, etc. are used

Other Dangerous Weapons. Assaults resulting from the use or threatened use of any object in which serious injury does or could result.

Hands, Fists, Feet Etc.- Aggravated Injury. Attacks using personal weapons such as hands, feet, fists, teeth that result in serious injury

Serious bodily injury includes but is not limited to:

Broken bones

A loss of consciousness

Significant blood loss

Or injury that requires medical treatment or hospitalization such as stitches or

casting

Burglary

The unlawful entry of a structure to commit a felony or a theft therein. For reporting purposes this definition includes: unlawful entry with intent to commit a larceny or felony; breaking and entering with intent to commit a larceny; housebreaking; safecracking; and all attempts to commit any of the aforementioned.

Forcible Entry. All Burglaries where force of any kind is used to unlawfully enter a structure for the purpose of committing a theft or felony. This rule applies when a thief gains entry by using tools; breaking windows; forcing window, doors, transoms, or ventilators; cutting screens, walls or roofs; and where known, using master keys, picks, unauthorized keys, celluloid, a mechanical contrivance of any kind (e.g., a passkey or skeleton key) or other devices that leave no outward mark but are used to force a lock. This includes Burglary by concealment inside a building followed by exiting the structure.

Unlawful Entry- No Force. Entry of a structure by use of an unlocked or opened door or window. The element of trespass to the structure is essential in this category, which includes thefts from open garages, open warehouses, open or unlocked dwellings (such as dorm rooms) and open or unlocked common basement areas in apartment houses where entry is achieved by someone other than the tenant who has lawful access, or others whom the tenant allows to have free and regular access to the structure. If an item was taken from an unlocked dorm room and you can establish that neither the tenant nor those friends with free and regular access to the room have taken the item, then unlawful access has occurred. In this context, it is important to note that a "breaking" occurs when a perpetrator crosses the threshold of a boundary that results in a trespass. As such it is possible for a burglar to "break" an open doorway or window. There is no requirement that entry be forced in any way or that damage to a door, window or frame be evident.

Attempted Forcible Entry. A situation where a forcible entry into a locked structure is attempted but not completed.

Motor Vehicle Theft

The theft or attempted theft of a motor vehicle. (Classify as motor vehicle theft all cases where automobiles are taken by persons not having lawful access even though the vehicles are later abandoned, including joyriding.)

Automobiles. Theft of all sedans, station wagons, convertibles, Sport utility vehicle, minivans or similar motor vehicles that serve the primary purpose of transporting people from one place to another.

Trucks and Buses. Theft of vehicles specially designed (but not necessarily used) to transport people and cargo. Pickup trucks and cargo vans are included in this category

Other Vehicles. Theft of all other motor vehicles that meet the Uniform Crime Report definition, such as snowmobiles, motorcycles, trial bikes, mopeds, golf carts, all-terrain vehicles and motorized wheelchairs.

Arson

Any willful or malicious burning or attempt to burn, with or without intent to defraud, a dwelling house, public building, motor vehicle or aircraft, personal property of another, etc.

Structural. This includes the willfully or maliciously burning or attempted burning of houses, townhouses, duplexes, apartments, tenements, flats, hotels, dormitories, boarding houses, barns, garages, warehouses, industrial/manufacturing structures, stores, restaurants, offices, etc.

Mobile. This includes the willfully or maliciously burning or attempted burning of automobiles, buses, motorcycles, trailers, recreational vehicles, airplanes, boats etc.

Other. This includes the willfully or maliciously burning or attempted burning of all property not classified as structural or mobile such as crops, fences, signs, and merchandise stored outside structures are included.

Hate Crimes

A criminal offense that manifests evidence that the victim was intentionally selected because of the perpetrator's bias against the victim.

Race: A performed negative attitude toward a group of persons who possess common physical characteristics (e.g., color of skin, eyes, and /or hair; facial features, etc) genetically transmitted by descent and heredity which distinguish them as a distinct division of humankind e.g., Asians, blacks or African Americans, whites.

Religion: A performed negative opinion or attitude toward a group of persons who share the same religious beliefs regarding the origin and purpose of the universe and the existence or nonexistence of a supreme being e.g., Catholics, Jews, Protestants, atheists.

Sexual orientation: A performed negative opinion or attitude toward a group of persons based on their actual or perceived sexual orientation. Sexual Orientation is the term for a person's physical, romantic, and/or emotional attraction to members of the same and /or opposite sex, including lesbian, gay, bisexual, and heterosexual (straight) individuals.

Gender: A performed negative opinion or attitude toward a person or group of persons based on their actual or perceived gender, e.g., male or female.

Gender Identity: A preformed negative opinion or attitude toward a person or group of persons based on their actual or perceived gender identity, e.g., bias

against transgender or gender non-conforming individuals. Gender non-conforming describes a person who does not conform to the gender-based expectations of society, e.g., a woman dressed in traditionally male clothing or a man wearing makeup. A gender non-conforming person may or may not be a lesbian, gay bisexual, or transgender person but may be perceived as such.

Ethnicity: A performed negative opinion or attitude toward a group of people whose members identify with each other, through a common heritage, often consisting of a common language, common culture (often including a shared religion) and/or ideology that stresses common ancestry. The concept of ethnicity differs from the closely related term “race” in that “race” refers to a grouping based mostly upon biological criteria, while “ethnicity” also encompasses additional cultural factors.

National origin: A performed negative opinion or attitude toward a group of people based on their actual or perceived country of birth. This bias may be against people that have a name or accent associated with a national origin group, participate in certain customs associated with a national origin group, or because they are married to or associate with people of a certain national origin.

Disability: A performed negative opinion or attitude toward a group of persons based on their physical or mental impairments, whether such disability is temporary or permanent, congenital or acquired by heredity, accident, injury, advanced age or illness.

For Clery Act purposes, Hate Crimes include any or the following offenses that are motivated by bias.

- Murder and Non-negligent Manslaughter
- Sexual Assault
- Robbery
- Aggravated Assault
- Burglary
- Motor Vehicle Theft
- Arson
- Larceny-Theft
- Simple Assault
- Intimidation
- Destruction/Damage/Vandalism of Property

Larceny-Theft is the unlawful taking, carrying, leading or riding away of property from the possession or constructive possession of another. Constructive possession is the condition in which a person does not have physical custody or possession, but is in a position to exercise dominion or control over a thing.

Simple Assault is an unlawful physical attack by one person upon another where neither the offender displays a weapon, nor the victim suffers obvious severe or aggravated bodily injury involving apparent broken bones, loss of teeth, possible internal injury, severe laceration, or loss of consciousness.

Intimidation is to unlawfully place another person in reasonable fear of bodily harm through the use of threatening words and/or other conduct, but without displaying a weapon or subjecting the victim to actual physical attack.

Destruction/Damage/Vandalism of Property is to willfully or maliciously destroy, damage, deface, or otherwise injure real or personal property without the consent of the owner or the

person having custody or control of it.

Dating Violence:

is violence committed by a person who is or has been in a social relationship of a romantic or intimate nature with the victim. The existence of such a relationship shall be based on the reporting party's statement and with consideration of the length of the relationship, the type of relationship, and the frequency of interaction between the persons involved in the relationship.

For the purposes of this definition –

- Dating Violence includes, but is not limited to, sexual or physical abuse or the threat of such abuse.
- Dating violence does not include acts covered under the definition of domestic violence.

Domestic Violence:

Felony or misdemeanor crime of violence committed –

- By a current or former spouse or intimate partner of the victim;
- By a person with whom the victim shares a child in common;
- By a person who is cohabitating with, or has cohabitated with, the victim as a spouse or intimate partner;
- By a person similarly situated to a spouse of the victim under the domestic or family violence laws of the jurisdiction in which the crime of violence occurred; or
- By any other person against an adult or youth victim who is protected from that person's acts under the domestic or family violence laws of the jurisdiction in which the crime of violence occurred.

Stalking: Engaging in a course of conduct directed at a specific person that would cause a reasonable person to –

- Fear for the person's safety or the safety of others or;
- Suffer substantial emotional distress.

For the purposes of this definition –

- Course of conduct means two or more acts, including, but not limited to, acts which the stalker directly, indirectly, or through third parties, by any action, method, device, or means follows, monitors, observes, surveils, threatens, or communicates to or about, a person, or interferes with a person's property.
- Reasonable person means a reasonable person under similar circumstances and with similar identities to the victim.
- Substantial emotional distress means significant mental suffering or anguish that may, but does not necessarily require medical or other professional treatment or counseling.

Consent is defined as the act of willingly agreeing to engage in specific sexual behavior. Silence or non-communication is not to be interpreted as consent and a person in a state of diminished judgment cannot consent. Consent requires that a person is able to freely choose between two options: yes and no. A person is incapable of giving consent if he/she is asleep, unconscious or otherwise unable to communicate. No one who has been threatened or coerced or drugged can consent. A person may be unable to give consent when he/she is under the influence of alcohol and/or drugs or is mentally handicapped. A current or prior sexual or dating relationship does not constitute consent. A

person can withdraw consent at any time during the course of a sexual encounter. Pursuing sexual contact in any form whatsoever with an unwilling or non-consenting partner is sexual assault. How exactly we know when the person we're with is consenting to, or refusing a sexual advance can be at times difficult to discern nevertheless the entire responsibility for correct discernment is upon the person making the advance.

Arrest for Clery Act purposes is defined as persons processed by arrest, citation or summons.

Arrests for Weapon Law Violations

The violation of laws or ordinances prohibiting the manufacture, sale, purchase, transportation, possession, concealment or use of firearms, cutting instruments, explosives, incendiary devices or other deadly weapons. This classification encompasses weapons offenses that are regulatory in nature.

Arrests for Drug Abuse Violations

Violations of laws prohibiting the production, distribution and/or use of certain controlled substances and the equipment or devices utilized in their preparation and/or use. The unlawful cultivation, manufacture, distribution, sale, purchase, use, possession, transportation or importation of any controlled drug or narcotic substance. Arrests for violations of state and local laws, specifically those relating to the unlawful possession, sale, use, growing, manufacturing and making of narcotic drugs.

Arrests for Liquor Law Violations

The violation of state or local laws or ordinances prohibiting manufacture, sale, purchase, transportation, possessing of intoxicating liquor; maintaining unlawful drinking places; bootlegging; operating a still; furnishing liquor to a minor or intemperate person; using a vehicle for illegal transportation of liquor; drinking on a train or public conveyance; and all attempts to commit any of the aforementioned. (Drunkness and driving under the influence are not included in this definition.)

Referred for disciplinary action is defined as the referral of any person to any official who initiates a disciplinary action of which a record is established and which may result in the imposition of a sanction.

Disciplinary Referrals for Weapon Law Violations

The violation of laws or ordinances prohibiting the manufacture, sale, purchase, transportation, possession, concealment or use of firearms, cutting instruments, explosives, incendiary devices or other deadly weapons. This classification encompasses weapons offenses that are regulatory in nature.

Disciplinary Referrals for Drug Abuse Violations

Violations of laws prohibiting the production, distribution and/or use of certain controlled substances and the equipment or devices utilized in their preparation and/or use. The unlawful cultivation, manufacture, distribution, sale, purchase, use, possession, transportation or importation of any controlled drug or narcotic substance. Arrests for violations of state and local laws, specifically those relating to the unlawful possession, sale, use, growing, manufacturing and making of narcotic drugs.

Disciplinary Referrals for Liquor Law Violations

The violation of state or local laws or ordinances prohibiting manufacture, sale, purchase, transportation, possessing of intoxicating liquor; maintaining unlawful drinking places; bootlegging; operating a still; furnishing liquor to a minor or intemperate person; using a vehicle for illegal transportation of liquor; drinking on a train or public conveyance; and all attempts to commit any of the aforementioned. (Drunkenness and driving under the influence are not included in this definition.)

Unfounded Crimes

If a reported crime is investigated by law enforcement authorities and found to be false or baseless, the crime is considered to be “unfounded”, and will not otherwise be counted as a crime statistic. Only sworn or commissioned law enforcement personnel may deem a crime “unfounded”.

2023: There were zero unfounded crimes

2022: There were zero unfounded crimes

2021: There were zero unfounded crimes

**CRIME STATISTICS
FOR RINDGE CAMPUS**

Offense	Venue	2021	2022	2023
Criminal Homicide	Total	0	0	0
Murder/Non-negligent Homicide	On Campus **	0	0	0
	Residential Facility	0	0	0
	Non-Campus Building or Property	0	0	0
	Public Property	0	0	0
Negligent Manslaughter	On Campus **	0	0	0
	Residential Facility	0	0	0
	Non-Campus Building or Property	0	0	0
	Public Property	0	0	0
Sex Offenses	Total	2	2	1
Rape	On Campus **	1	1	1
	Residential Facility	1	1	1
	Non-Campus Building or Property	0	0	0
	Public Property	0	0	0
Fondling	On Campus **	1	1	0
	Residential Facility	1	0	0
	Non-Campus Building or Property	0	0	0
	Public Property	0	0	0
Sex Offenses	Total	0	0	0
Incest	On Campus **	0	0	0
	Residential Facility	0	0	0
	Non-Campus Building or Property	0	0	0
	Public Property	0	0	0
Statutory Rape	On Campus **	0	0	0
	Residential Facility	0	0	0
	Non-Campus Building or Property	0	0	0
	Public Property	0	0	0

Offense	Venue	2021	2022	2023
Robbery	Total	0	1	0
Firearm	On Campus **	0	0	0
	Residential Facility	0	0	0
	Non-Campus Building or Property	0	0	0
	Public Property	0	0	0
Knife or Cutting Instrument	On Campus **	0	0	0
	Residential Facility	0	0	0
	Non-Campus Building or Property	0	0	0
	Public Property	0	0	0
Other Dangerous Weapon	On Campus **	0	0	0
	Residential Facility	0	0	0
	Non-Campus Building or Property	0	0	0
	Public Property	0	0	0
Strong-arm	On Campus **	0	1	0
	Residential Facility	0	0	0
	Non-Campus Building or Property	0	0	0
	Public Property	0	0	0
Aggravated Assault	Total	0	1	0
Firearm	On Campus **	0	0	0
	Residential Facility	0	0	0
	Non-Campus Building or Property	0	0	0
	Public Property	0	0	0
Knife or Cutting Instrument	On Campus **	0	0	0
	Residential Facility	0	0	0
	Non-Campus Building or Property	0	0	0
	Public Property	0	0	0
Other Dangerous Weapon	On Campus **	0	1	1
	Residential Facility	0	0	1
	Non-Campus Building or Property	0	0	0
	Public Property	0	0	0
Hands/Fist/Feet (with aggravated injury)	On Campus **	0	0	0
	Residential Facility	0	0	0
	Non-Campus Building or Property	0	0	0
	Public Property	0	0	0

Offense	Venue	2021	2022	2023
Burglary	Total	0	0	0
Forcible Entry	On Campus **	0	0	0
	Residential Facility	0	0	0
	Non-Campus Building or Property	0	0	0
	Public Property	0	0	0
Unlawful Entry – No Force	On Campus **	0	0	0
	Residential Facility	0	0	0
	Non-Campus Building or Property	0	0	0
	Public Property	0	0	0
Attempted Forcible Entry	On Campus **	0	0	0
	Residential Facility	0	0	0
	Non-Campus Building or Property	0	0	0
	Public Property	0	0	0
Motor Vehicle Theft	Total	0	0	0
Automobiles	On Campus **	0	0	0
	Residential Facility	0	0	0
	Non-Campus Building or Property	0	0	0
	Public Property	0	0	0
Trucks/Buses	On Campus **	0	0	0
	Residential Facility	0	0	0
	Non-Campus Building or Property	0	0	0
	Public Property	0	0	0
Other Vehicles	On Campus **	0	0	0
	Residential Facility	0	0	0
	Non-Campus Building or Property	0	0	0
	Public Property	0	0	0
Arson	Total	1	0	0
Structural	On Campus **	1	0	0
	Residential Facility	1	0	0
	Non-Campus Building or Property	0	0	0
	Public Property	0	0	0
Mobile	On Campus **	0	0	0
	Residential Facility	0	0	0
	Non-Campus Building or Property	0	0	0
	Public Property	0	0	0
Other	On Campus **	0	0	0
	Residential Facility	0	0	0
	Non-Campus Building or Property	0	0	0
	Public Property	0	0	0

ARRESTS AND DISCIPLINARY REFFERALS

	Venue	2021	2022	2023
Arrests***	TOTAL	7	5	0
Liquor Law Violations	On Campus **	2	0	0
	Residential Facility	0	0	0
	Non-Campus Building or Property	0	0	0
	Public Property	0	0	0
Drug Law Violations	On Campus **	5	5	0
	Residential Facility	5	5	0
	Non-Campus Building or Property	0	0	0
	Public Property	0	0	0
Weapons Law Violations	On Campus **	0	0	0
	Residential Facility	0	0	0
	Non-Campus Building or Property	0	0	0
	Public Property	0	0	0
Disciplinary Referrals	TOTAL	50	181	70
Liquor Law Violations	On Campus **	40	123	51
	Residential Facility	40	115	51
	Non-Campus Building or Property	0	0	0
	Public Property	0	0	0
Drug Law Violations	On Campus **	10	54	18
	Residential Facility	10	54	14
	Non-Campus Building or Property	0	0	0
	Public Property	0	0	0
Weapons Law Violations	On Campus **	0	4	1
	Residential Facility	0	4	1
	Non-Campus Building or Property	0	0	0
	Public Property	0	0	0

** This category includes all on-campus incidents, including those listed in the category below, "Residential Facility" Therefore, the two categories are not cumulative, but duplicative.

*** The arrests reported by Rindge Police Department were not location specific; the venue of arrest is not known other than on campus.
 The referrals reported by the University and the arrests reported by the police department may be duplicative as no names or specifics were provided to prevent duplicity.

HATE CRIMES

YEAR	GEOGRAPHY	CRIME	BIAS
2021	Off-Campus	Intimidation	Race
2022	Zero hate crimes for 2022		
2023	Zero hates crimes for 2023		

VAWA Reporting Requirements

	Venue	2021	2022	2023
Dating Violence	On Campus **	3	1	1
	Residential Facility	1	1	1
	Non-Campus Building or Property	0	0	0
	Public Property	0	0	0
Domestic Violence	On Campus **	0	0	0
	Residential Facility	0	0	0
	Non-Campus Building or Property	0	0	0
	Public Property	0	0	0
Stalking	On Campus **	3	6	0
	Residential Facility	2	2	0
	Non-Campus Building or Property	0	0	0
	Public Property	0	0	0

All records for 2021, 2022 and 2023 were reviewed to ensure compliance with the requirements of the Act.

FIRE REPORT

FIRE SAFETY SYSTEMS IN FRANKLIN PIERCE RESIDENTIAL FACILITIES

Franklin Pierce University currently houses students in thirteen on-campus buildings/complexes that range from traditional residence halls and apartments to town home or condominium style structures. All residential and mixed use buildings of the main campus area are monitored by active heat and/or smoke detectors as part of a comprehensive fire protection system. These alarm systems include local audible and/or strobe lights along with a monitored network.

The following tables show the residential facilities and the types of Fire Safety Systems and the number of evacuation drills conducted in them. All residential facilities will conduct an evacuation drill each semester, under the supervision of Campus Safety, Residential Life, Rindge Fire Department and Franklin Pierce Fire Company.

Residence Hall	Fire Alarm Monitoring (Done on-Site by Campus Safety)	Sprinkler System	Smoke Detection	Fire Extinguisher Devices	Evacuation Plans and Placards	Number of Evacuation (fire) drills each calendar year
Cheshire Hall	X	X	X	X	X	2
Edgewood Hall	X	X	X	X	X	2
Granite Hall	X	X	X	X	X	2
Lakeview Building # 1	X	N/A	X	X	X	2
Lakeview Building # 2	X	N/A	X	X	X	2
Lakeview Building # 3	X	N/A	X	X	X	2
Lakeview Building # 4	X	N/A	X	X	X	2
Monadnock Hall	X	X	X	X	X	2
Mt. Washington Hall	X	X	X	X	X	2
Mountain View Apartments	X	X	X	X	X	2
New Hampshire Hall	X	X	X	X	X	2
Northwoods Apartments	X	X	X	X	X	2
Sawmill Apartments	X	N/A	X	X	X	2

REPORTING FIRES

Fires should be immediately reported to the Department of Campus Safety at extensions **5555/4210** and or local emergency services by dialing 911 from any phone. Additionally the following parties may be contacted should you have any information about fires or alarms:

CONTACT	Business	Emergency
Department of Campus Safety	899 - 4210	5555
Rindge Fire Department	899 - 3324	911
Rindge Police Department	899 - 5009	911
Vice President for Student Affairs	899 - 4162	
Director of Residence Life and Community Standards	899-4178	
Director of Residential Life	899 - 4167	
All Resident Directors of Residential Life	899 - 4176	
Campus Safety Director	899 - 4102	

RESIDENTIAL FACILITY FIRES

2023 Statistics and Related Information Regarding Fires in Residential Facilities						
Residential Facilities	Total Fires in Each Building	Fire #	Cause of fire	Number of Injuries that required treatment at a Medical Facility	Number of deaths related to a fire	Value of property damage caused by fire
Cheshire Hall - 215 Pierce Drive	1	1	Paper burned	N/A	N/A	\$0-\$99
Edgewood Hall – 37 Pierce Drive	0	0	N/A	N/A	N/A	N/A
Granite Hall – 267 Pierce Drive	0	0	N/A	N/A	N/A	N/A
Lakeview Building # 1 44 Sawmill Road	0	0	N/A	N/A	N/A	N/A
Lakeview Building # 2 31 Sawmill Road	0	0	N/A	N/A	N/A	N/A
Lakeview Building # 3 40 Sawmill Road	0	0	N/A	N/A	N/A	N/A
Lakeview Building # 4 43 Sawmill Road	0	0	N/A	N/A	N/A	N/A
Monadnock Hall – 21 Pierce Drive	0	0	N/A	N/A	N/A	N/A
Mt. Washington Hall – 245 Pierce Hall	0	0	N/A	N/A	N/A	N/A
Mountain View Apts. 177 Pierce Drive	0	0	N/A	N/A	N/A	N/A
New Hampshire Hall – 263 Pierce Drive	0	0	N/A	N/A	N/A	N/A
Northwoods Apts. 103 Pierce Drive	2	2	Cooking , Dryer	N/A	N/A	\$0-\$99
Sawmill Apts. – 9 Sawmill Road	0	0	N/A	N/A	N/A	N/A

RESIDENTIAL FACILITY FIRES

2022 Statistics and Related Information Regarding Fires in Residential Facilities						
Residential Facilities	Total Fires in Each Building	Fire #	Cause of fire	Number of Injuries that required treatment at a Medical Facility	Number of deaths related to a fire	Value of property damage caused by fire
Cheshire Hall - 215 Pierce Drive	1	1	Electric cord burned	N/A	N/A	\$0-\$99
Edgewood Hall – 37 Pierce Drive	0	0	N/A	N/A	N/A	N/A
Granite Hall – 267 Pierce Drive	0	0	N/A	N/A	N/A	N/A
Lakeview Building # 1 44 Sawmill Road	0	0	N/A	N/A	N/A	N/A
Lakeview Building # 2 31 Sawmill Road	0	0	N/A	N/A	N/A	N/A
Lakeview Building # 3 40 Sawmill Road	0	0	N/A	0	0	N/A
Lakeview Building # 4 43 Sawmill Road	0	0	N/A	N/A	N/A	N/A
Monadnock Hall – 21 Pierce Drive	0	0	N/A	N/A	N/A	N/A
Mt. Washington Hall – 245 Pierce Hall	0	0	N/A	N/A	N/A	N/A
Mountain View Apts. 177 Pierce Drive	0	0	N/A	N/A	N/A	N/A
New Hampshire Hall – 263 Pierce Drive	0	0	N/A	N/A	N/A	N/A
Northwoods Apts. 103 Pierce Drive	2	2	Electric cord burned for both	N/A	N/A	\$0-\$99
Sawmill Apts. – 9 Sawmill Road	0	0	N/A	N/A	N/A	N/A

2021 Statistics and Related Information Regarding Fires in Residential Facilities						
Residential Facilities	Total Fires in Each Building	Fire #	Cause of Cause of fire	Number of Injuries that required treatment at a Medical Facility	Number # of deaths related to a fire	Value of property damage caused by fire
Cheshire Hall - 215 Pierce Drive	0	0	N/A	N/A	N/A	N/A
Edgewood Hall – 37 Pierce Drive	1	1	Lighting Cardboard Box	N/A	N/A	\$0-\$99
Granite Hall – 267 Pierce Drive	0	0	N/A	N/A	N/A	N/A
Lakeview Building # 1 44 Sawmill Road	0	0	N/A	N/A	N/A	N/A
Lakeview Building # 2 31 Sawmill Road	0	0	N/A	N/A	N/A	N/A
Lakeview Building # 3 40 Sawmill Road	0	0	N/A	N/A	N/A	N/A
Lakeview Building # 4 43 Sawmill Road	1	1	Cooking	0	0	\$0-\$99
Monadnock Hall – 21 Pierce Drive	0	0	N/A	N/A	N/A	N/A
Mt. Washington Hall – 245 Pierce Hall	0	0	N/A	N/A	N/A	N/A
Mountain View Apts. 177 Pierce Drive	0	0	N/A	N/A	N/A	N/A
New Hampshire Hall – 263 Pierce Drive	1	1	Dryer	0	0	\$1000-\$5000
Northwoods Apts. 103 Pierce Drive	0	0	N/A	N/A	N/A	N/A
Sawmill Apts. 9 Sawmill Road	0	0	N/A	N/A	N/A	N/A

RESIDENTIAL FIRE POLICIES

From the Franklin Pierce University Student Handbook:

The "Indoor Smoking Act" enacted by the New Hampshire Legislature, became effective for all public buildings and institutions in January 1991, and then for private institutions and workplaces, such as Franklin Pierce University, on July 1, 1993. To comply with this law, all university buildings are designated as nonsmoking, including all offices and restrooms. The only exceptions will be student resident facilities where the Director of Residence Life and Community Standards may designate some effectively segregated smoking areas. There is no smoking in any common area within the residence facilities. This includes all hallways, restrooms, stair wells, etc. In addition, there is no smoking in New Hampshire, Granite, Mount Washington, Monadnock, Edgewood and Cheshire Halls. This legislation includes a complaint procedure for the benefit of nonsmokers who feel their health and well-being are being endangered by involuntary exposure to ETS (Environmental Tobacco Smoke), or passive smoke. The resulting investigation of such a complaint, where if a person is found to have been smoking in a place where smoking is prohibited, will result in that person being declared guilty of a civil violation and subject to a fine of not less than \$100.

Complaints should be reported to the Department of Campus Safety, where they will be forwarded for investigation by Judicial Affairs. The resulting report will be forwarded to Dean of Student Affairs for adjudication. Faculty-staff violations are forwarded to the Office of Human Resources. During the Spring 2003 semester, the SGA passed legislation entitled, "Smoking Zone Policy." This policy prohibits smoking within ten (10) feet of any building doorway. The goal of this policy is to ensure a smoke free zone surrounding all entranceways to buildings.

FIRE SAFETY AND FIRE REGULATIONS

As a community, we are concerned about the health and safety of all members. Persons who pull false alarms, tamper with fire equipment, including extinguishers, bells, and detectors, engage in a serious infringement on the rights of others. As such, tampering with any life-safety equipment is considered a separation level offense through the judicial process. Students accused of tampering with fire safety equipment are subject to arrest as well.

False alarms can create injury to persons attempting to evacuate a building. Tampered with or missing equipment may not be available in a life-threatening situation requiring immediate response. Students living in areas where a false alarm occurs will be assessed the following fines and be subject to possible disciplinary action.

Common Areas (i.e. hallways, bathrooms, laundry rooms) - \$5.00 per person
Individual room/unit/suite - \$150.00
Malicious - \$300.00

Resident students are required to practice prudent and sensible fire safety measures. Do not over-load electrical outlets. The hanging of tapestries, flags, blankets, etc. on the ceilings is prohibited. Limit clutter and excessive amounts of combustibles. Open flame devices, candles, oil or kerosene lamps, burners and incense are similarly prohibited. Fire doors in hallways and stairwells may not be blocked open at any time. Private gatherings must be limited to 10 people in any given room due to fire safety regulations. A window is both an additional exit for the resident and an egress for fire personnel in case of emergency; therefore, under no circumstances should the windows be blocked. Fans may be used but the screens should not be removed at any time.

The following electrical appliances are permitted in residence halls provided their use does not disturb other occupants and do not constitute a fire hazard: television sets, radios, stereos, electric razors, hot pots, clocks, hair dryers, irons, lamps, fans and small (3 cubic feet or less) compact refrigerators. Make sure all appliances are marked Underwriters Laboratories (UL) inspected. All extension cords must be equipped with an over current protection device in them such as a circuit breaker.

The following appliances and other items are prohibited in all residences. These items are responsible for actual fires in college and university housing units throughout the United States.

Hot Plates	Oil Lamps	Sparklers
Smoke Bombs	Chemicals	Space Heaters
Smoke Machines	Immersion Coils	Fireworks
Candles (This includes for religious purposes)	Refrigerators Larger than 3 Cubic Feet	Microwaves not provided by Microfridge
Electrical wiring that is homemade or modified creating a shock or fire hazard.	All flammable & combustible liquids. Includes art supplies such as thinners	Gasoline-powered items motorcycles, mopeds, or their components.
Devices with open flames	Electric Toaster Ovens	Halogen Lamps
Incense and Burners	Air Conditioners	Electric Skillets or Pans
Electric Woks	Rice Cookers	George Forman Grills
Propane Grills or Tanks	Toasters	Ceiling Fans

<p>Wall hangings made of burlap or any flammable material, tapestries, fish netting, flags or wicker. Nothing Combustible attached to ceilings.</p>	<p>Extension cords longer than six (6) feet. Ext cords must be in plain view, may not be run under rugs, doors or secured to building or furniture.</p>	<p>Any decorative lighting that is hung from the ceiling or is in contact with any combustible materials tapestry, posters, pictures.</p>
---	---	---

Cooking is not allowed in residence halls or suite rooms, or in any other room except the kitchen.

Decorative lighting may not be hung in such a way as to touch combustible materials such as, but not limited to: posters, mattresses, clothes, etc. No items may be hung from sprinkler heads, sprinkler system pipes, smoke sensors, ceiling or any metal fixtures.

Any Fire Company officer and/or a member(s) of the Department of Campus Safety may conduct periodic fire and safety inspections of rooms with a member of the Residence Life staff. Sanctions for violations of fire safety regulations are dealt with in accordance with the College at Rindge Student Code of Conduct. Outside fires of any kind are prohibited without first obtaining a fire permit from the Department of Campus Safety. A fire permit must be requested a minimum of 24 hours in advance.

Charcoal grills may be used but no closer than 20 feet from any building or structure. Coals must be properly extinguished after grilling. Propane or gas grills are prohibited.

From Student Code of Conduct

- 10. Misuse or abuse of fire safety equipment**, including the activation of false alarms, the misuse of emergency exits, the wrongful discharge of fire extinguishers, or tampering with alarm systems, sprinkler systems, and smoke alarms constitutes a serious violation of the Student Code. Such violations endanger the life safety of the community. Further, students are required to evacuate any building when a fire alarm is sounding. Students may be fined for activation of an alarm system as established by the town ordinance (see Article IV, Section H, number 4).
- 11. Violation of any federal, state or local law.** As the University is part of a larger community, students are expected to observe all federal, state and local laws, in addition to university policies.

FRANKLIN PIERCE FIRE COMPANY AND EMS SQUAD

The Franklin Pierce Fire Company (FPFC) is made up of student volunteers and operates under the authority of the Rindge Fire Department. While in service during the academic year the FPFC responds to all fire related calls on campus providing rapid response and protection to the community. As part of their commitment to the University and Company members of the FPFC can attend and be certified in nationally recognized courses ranging from Fire Fighter I/II, Wild land fires, SCBA, National Incident Management System, and Incident Command System among others through local and state agencies.

FPFC in-service training includes:

- Hydrants
- Search and Rescue
- Automobile Extrications
- Confined Spaces
- Ropes and Knots
- Building walk-through
- Repelling Drill
- Ladders
- Mass Casualty Drill with EMS
- Radio Communications
- Fire Fighter Safety

The Franklin Pierce University Emergency Medical Service (EMS) Squad is made up of student volunteers operating under the guidance of the Director of Health Services. While in service during the academic year the FPEMS Squad responds to emergency medical related calls on campus providing rapid response and protection to the community. Members of the FPEMS Squad are trained to and carry National Registry credentials as Emergency Medical Technicians. Additionally, certified members of the Squad are required to receive forty hours annually of Continuing Education Units (CEU) to maintain their provider license.

Special services to the community provided by the Squad include semi annual blood drives, CPR classes and medical coverage at many University athletic events.

FIRE SAFETY EDUCATION AND TRAINING

Fire safety education and training is provided by and in conjunction with several departments on campus; these include the Department of Residential Life, the Franklin Pierce Fire Company, the Franklin Pierce EMS Squad and the Department of Campus Safety.

Residential Life holds two supervised fire drills each year, one per semester in all residence. As part of these drills fire safety inspections of student residences are performed by members of one or both the Rindge Fire Department and FPFC. During these drills and inspections, members of the Department of Residential Life will check for and enforce violations of University policies as they are found. Additionally, six unannounced room inspections are conducted each year for health and safety concerns.

Resident Directors of the Residential Life staff and Para-professional student staff conduct hall programs with members of the FPFC for incoming freshman on a recurring basis through out the academic year. These programs include general fire safety, evacuation procedures and the “Learn not to burn” or similar presentations.

As part of each STEP Day, Open House and new student orientation held representatives of the FPFC and FPEMS Squad are on hand at informational tables to answer questions and address student concerns.

DEPARTMENT
Of
CAMPUS SAFETY

EMPLOYEES

Armin Coric	Overseeing Director
Kristofer Towle	Director
Jeremy Bishop	Shift Team Lead
Thomas Coffee	Shift Team Lead
Jean Angervil	Safety Officer/Communication Specialist
Dan Dumas	Safety Officer/Communication Specialist
Vanessa Erilchson-Diaz	Safety Officer/Communication Specialist
Aaron Mallett	Safety Officer/Communication Specialist
Liz Mallett	Safety Officer/Communication Specialist
Macey Morse	Safety Officer/Communication Specialist
Richard Roy	Safety Officer/Communication Specialist
Sean Storer	Safety Officer/Communication Specialist

STUDENT EMPLOYEES

Student Safety Officers	0
Fire Company Firefighters	12

MISSION STATEMENT

The Franklin Pierce University Department of Campus Safety is committed to providing an environment conducive to living, learning and working, through crime awareness education, proactive patrol, investigations, communications and extensive Campus Safety services. The Department strives to enrich and support the University’s mission of education for the *Individual and Community*.

IMPORTANT PHONE NUMBERS

Immediate Campus Safety Service.....	899-5555
Campus Safety.....	899-4210
Rindge Police Department.....	899-5009
Director of Campus Safety.....	899-4165
Transportation.....	899-4388
Campus Safety Fax.....	899-4325
Health Center.....	899-4130
Residential Life.....	899-4176
Center for Outreach Education.....	899-4130
Academic Services.....	899-4107
Monadnock Center for Violence Prevention.....	352-3782
Samaritans (Crisis Hotline).....	357-5505
Poison Control.....	1-800-562-8236

SHUTTLE

Monday – Thursday.....	7:30 am – 8:00 pm
Friday.....	7:30 am – 6:00 pm
Saturday.....	4:00 pm – 6:00 pm
Sunday.....	4:00 pm – 6:00 pm

SAFERIDES

Friday and Saturday.....	10:00 PM – 2:00 AM
--------------------------	--------------------